

Site Accessibility Evaluation

Americans with Disabilities Act

And

Title 24 And Part 2 - California Building Code



Eastside Library
1102 E Montecito St
Santa Barbara, CA 93103
Accessibility Evaluation
Inspection Date: 08/16/2023
Inspectors: Scott Saddlemire

Prepared By



SALLY SWANSON
ARCHITECTS, INC.

(415) 308 - 6555

Report Date: 11/03/2023

Table of Contents

Findings	3
Parking	3
Parking	3
Accessible Routes	7
Exterior Accessible Routes	7
Entrances	44
Library	56
Main Library	56
East Patio	65
North Patio	74
Community area	84
Near Restrooms	84
Martin Luther King Wing	90
Womens Restroom	103
Womens Restroom	103
Mens Restroom	121
Mens Restroom	121

Parking: Parking

Finding: 1

The access aisle is on the driver's side of the stall.

Access aisles must be located on the passenger side of the stall for van accessible stalls and must be 8 feet wide (measured center line to center line) by 18 feet long.

Where the access aisle is not adjacent to another parking space or access aisle the measurements shall be permitted to include the full width of the line defining the parking space or access aisle.

Access aisles may be a minimum of 5 feet wide if the parking stall is a minimum of 12 feet wide.

2022 CBC 11B Section 11B-502.3.4

Access aisles shall not overlap the vehicular way. Access aisles shall be permitted to be placed on either side of the parking space except for van parking spaces which shall have access aisles located on the passenger side of the parking spaces.

Citation:

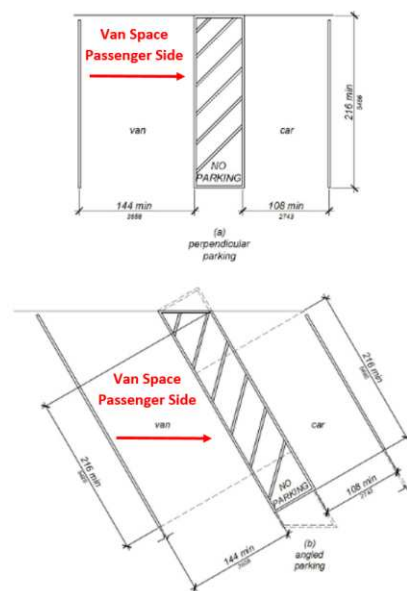
2022 CBC 11B Section:
11B-502.3.4

As Built:

Van sign on regular stall,
detectable warnings

Recommendation:

The accessible parking sign states that this is an accessible VAN stall. It is constructed as a regular accessible stall so the sign needs to be changed to a regular accessible stall sign



Finding: 1 Additional Finding Photos



Parking: Parking

Finding: 2

The required detectable warning surface is not provided at the parallel curb ramp.

Where the turning space has one entrance/exit point other than the sloped ramp segments, detectable warnings shall be 36 inches deep, as measured perpendicular to the curb, and the turning space shall provide minimum 36 inches wide portion without detectable warnings to allow pedestrian travel in the direction of the sidewalk without travelling over the detectable warnings.

2022 CBC 11B Section 11B-247.1.2.2

Curb ramps shall have detectable warnings complying with Sections 11B-705.1.1 and 11B-705.1.2.2.

2022 CBC 11B Section 11B-705.1.2.2.1

Where the turning space has one entrance/exit point other than the sloped ramp segments, detectable warnings shall be 36 inches (914 mm) deep, as measured perpendicular to the curb, and the turning space shall provide minimum 36 inches (914 mm) wide portion without detectable warnings to allow pedestrian travel in the direction of the sidewalk without travelling over the detectable warnings.

Citation:

As Built:

2022 CBC 11B Section:
11B-247.1.2.2, 11B-705.1.2.2.1

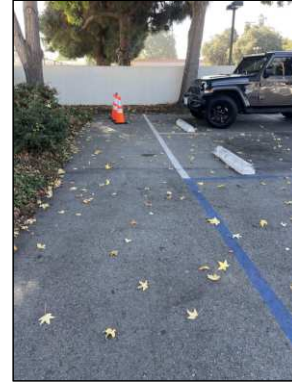
N/A

Recommendation:

All of the zero curb adjacent to the parking lot and the curb ramp needs detectable warnings



Finding: 2 Additional Finding Photos



Accessible Routes: Exterior Accessible Routes

Finding: 3

The accessible path of travel between the building and the public way on the site has cross slopes greater than 2%.

Surface cross slopes shall not exceed one unit vertical in 48 units horizontal (2-percent slope).

2010 ADAS Section 403.3

The running slope of walking surfaces shall not be steeper than 1:20. The cross slope of walking surfaces shall not be steeper than 1:48.

2022 CBC 11B Section 11B-403.3

The running slope of walking surfaces shall not be steeper than 1:20. The cross slope of walking surfaces shall not be steeper than 1:48.

Citation:

2010 ADAS Section: 403.3

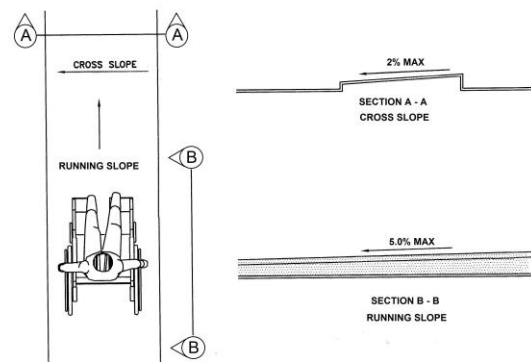
As Built:

N/A

2022 CBC 11B Section:
11B-403.3

Recommendation:

N/A - Refer to Finding



Finding: 3 Additional Finding Photos



Accessible Routes: Exterior Accessible Routes

Finding: 4

The accessible route on the site has running slopes greater than 5 percent and has not been constructed as a ramp (i.e. handrails, edge protection, etc.).

When the slope in the direction of travel of any walk exceeds 1 unit vertical in 20 units horizontal (5-percent slope), it must be constructed as a ramp. Surface cross slopes must not exceed one unit vertical in 48 units horizontal (2-percent slope).

2010 ADAS Section 403.3

The running slope of walking surfaces shall not be steeper than 1:20. The cross slope of walking surfaces shall not be steeper than 1:48.

2022 CBC 11B Section 11B-403.3

The running slope of walking surfaces shall not be steeper than 1:20. The cross slope of walking surfaces shall not be steeper than 1:48.

Citation:

2010 ADAS Section: 403.3

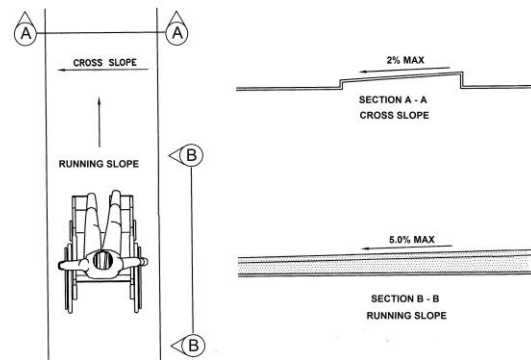
As Built:

N/A

2022 CBC 11B Section:
11B-403.3

Recommendation:

N/A - Refer to Finding



Finding: 4 Additional Finding Photos



Accessible Routes: Exterior Accessible Routes

Finding: 5

The walkway contains abrupt vertical edges and/or variations over 1/4 inch.

1/4 inch is the maximum vertical rise. Changes in level between 1/4 inch and 1/2 inch must be beveled at 1:2 or less.

Changes in level greater than 1/2 inch must be by way of a ramp.

2010 ADAS Section 303.3

Changes in level between 1/4 inch (6.4 mm) high minimum and 1/2 inch (13 mm) high maximum shall be beveled with a slope not steeper than 1:2.

2010 ADAS Section 303.2

Changes in level of 1/4 inch (6.4 mm) high maximum shall be permitted to be vertical.

2022 CBC 11B Section 11B-303.2

Changes in level of 1/4 inch (6.4 mm) high maximum shall be permitted to be vertical and without edge treatment.

2022 CBC 11B Section 11B-303.3

Changes in level between 1/4 inch (6.4 mm) high minimum and 1/2 inch (12.7 mm) high maximum shall be beveled with a slope not steeper than 1:2.

Citation:

As Built:

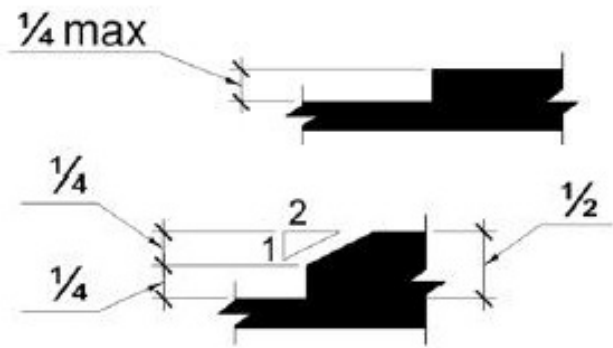
2010 ADAS Section: 303.3, 303.2 N/A

2022 CBC 11B Section:
11B-303.2, 11B-303.3

Recommendation:

N/A - Refer to Finding

Finding: 5 (Continued)



Accessible Routes: Exterior Accessible Routes

Finding: 6

The walkway contains abrupt vertical edges and/or variations over 1/4 inch.

1/4 inch is the maximum vertical rise. Changes in level between 1/4 inch and 1/2 inch must be beveled at 1:2 or less.

Changes in level greater than 1/2 inch must be by way of a ramp.

2010 ADAS Section 303.3

Changes in level between 1/4 inch (6.4 mm) high minimum and 1/2 inch (13 mm) high maximum shall be beveled with a slope not steeper than 1:2.

2010 ADAS Section 303.2

Changes in level of 1/4 inch (6.4 mm) high maximum shall be permitted to be vertical.

2022 CBC 11B Section 11B-303.2

Changes in level of 1/4 inch (6.4 mm) high maximum shall be permitted to be vertical and without edge treatment.

2022 CBC 11B Section 11B-303.3

Changes in level between 1/4 inch (6.4 mm) high minimum and 1/2 inch (12.7 mm) high maximum shall be beveled with a slope not steeper than 1:2.

Citation:

As Built:

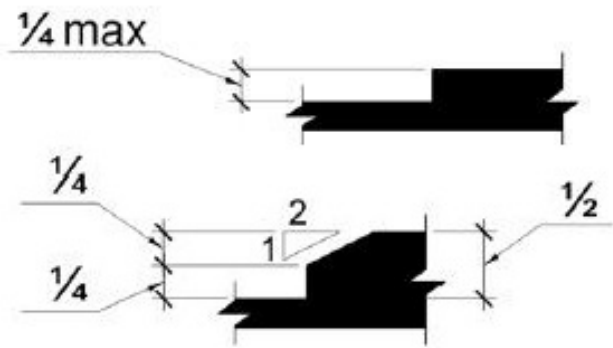
2010 ADAS Section: 303.3, 303.2 N/A

2022 CBC 11B Section:
11B-303.2, 11B-303.3

Recommendation:

N/A - Refer to Finding

Finding: 6 (Continued)



Finding: 6 Additional Finding Photos



Accessible Routes: Exterior Accessible Routes

Finding: 7

The element extends down too close to the route of travel.

Any obstruction that overhangs a route of travel must be a minimum of 80 inches above the walking surface as measured to the bottom of the obstruction.

2010 ADAS Section 307.3

Free-standing objects mounted on posts or pylons shall overhang circulation paths 12 inches (305 mm) maximum when located 27 inches (685 mm) minimum and 80 inches (2030 mm) maximum above the finish floor or ground. Where a sign or other obstruction is mounted between posts or pylons and the clear distance between the posts or pylons is greater than 12 inches (305 mm), the lowest edge of such sign or obstruction shall be 27 inches (685 mm) maximum or 80 inches (2030 mm) minimum above the finish floor or ground.

2022 CBC 11B Section 11B-307.4

Vertical clearance shall be 80 inches (2032 mm) high minimum. Guardrails or other barriers shall be provided where the vertical clearance is less than 80 inches (2032 mm) high. The leading edge of such guardrail or barrier shall be located 27 inches (686 mm) maximum above the finish floor or ground.

Citation:

2010 ADAS Section: 307.3

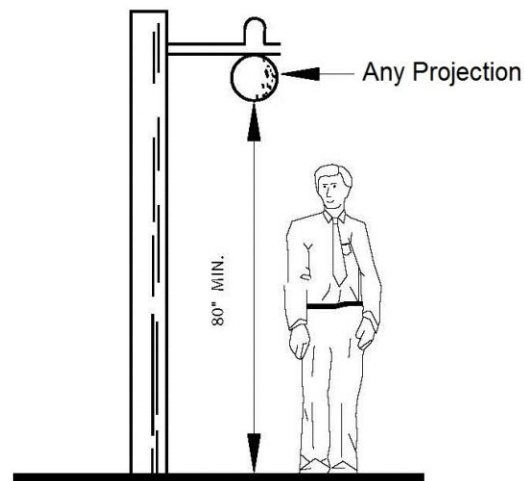
As Built:

N/A

2022 CBC 11B Section:
11B-307.4

Recommendation:

N/A - Refer to Finding



Accessible Routes: Exterior Accessible Routes

Finding: 8

The walkway contains abrupt vertical edges and/or variations over a 1/2 inch.

1/4 inch is the maximum vertical rise. Changes in level between 1/4 inch and 1/2 inch must be beveled at 1:2 or less.

Changes in level greater than 1/2 inch must be by way of a ramp.

2010 ADAS Section 303.3

Changes in level between 1/4 inch (6.4 mm) high minimum and 1/2 inch (13 mm) high maximum shall be beveled with a slope not steeper than 1:2.

2010 ADAS Section 303.2

Changes in level of 1/4 inch (6.4 mm) high maximum shall be permitted to be vertical.

2022 CBC 11B Section 11B-303.2

Changes in level of 1/4 inch (6.4 mm) high maximum shall be permitted to be vertical and without edge treatment.

2022 CBC 11B Section 11B-303.3

Changes in level between 1/4 inch (6.4 mm) high minimum and 1/2 inch (12.7 mm) high maximum shall be beveled with a slope not steeper than 1:2.

Citation:

As Built:

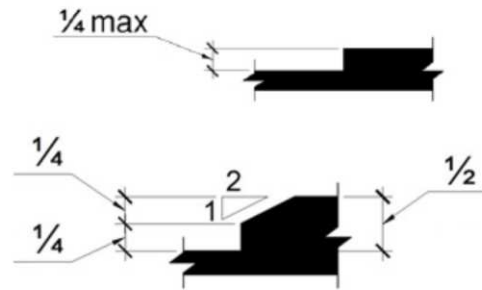
2010 ADAS Section: 303.3, 303.2 N/A

2022 CBC 11B Section:
11B-303.2, 11B-303.3

Recommendation:

N/A - Refer to Finding

Finding: 8 (Continued)



Finding: 8 Additional Finding Photos



Accessible Routes: Exterior Accessible Routes

Finding: 9

The walkway contains abrupt vertical edges and/or variations over 1/4 inch.

1/4 inch is the maximum vertical rise. Changes in level between 1/4 inch and 1/2 inch must be beveled at 1:2 or less.

Changes in level greater than 1/2 inch must be by way of a ramp.

2010 ADAS Section 303.3

Changes in level between 1/4 inch (6.4 mm) high minimum and 1/2 inch (13 mm) high maximum shall be beveled with a slope not steeper than 1:2.

2010 ADAS Section 303.2

Changes in level of 1/4 inch (6.4 mm) high maximum shall be permitted to be vertical.

2022 CBC 11B Section 11B-303.2

Changes in level of 1/4 inch (6.4 mm) high maximum shall be permitted to be vertical and without edge treatment.

2022 CBC 11B Section 11B-303.3

Changes in level between 1/4 inch (6.4 mm) high minimum and 1/2 inch (12.7 mm) high maximum shall be beveled with a slope not steeper than 1:2.

Citation:

As Built:

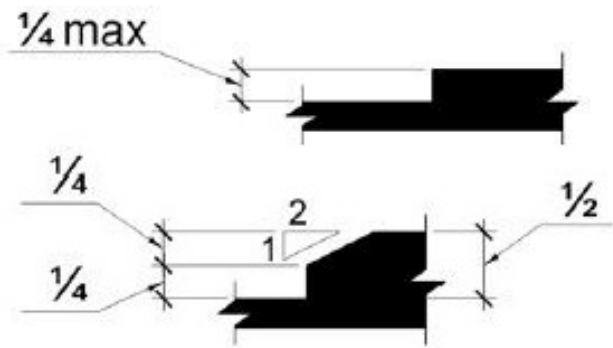
2010 ADAS Section: 303.3, 303.2 N/A

2022 CBC 11B Section:
11B-303.2, 11B-303.3

Recommendation:

N/A - Refer to Finding

Finding: 9 (Continued)



Accessible Routes: Exterior Accessible Routes

Finding: 10

The walkway contains abrupt vertical edges and/or variations over 1/4 inch.

1/4 inch is the maximum vertical rise. Changes in level between 1/4 inch and 1/2 inch must be beveled at 1:2 or less.

Changes in level greater than 1/2 inch must be by way of a ramp.

2010 ADAS Section 303.3

Changes in level between 1/4 inch (6.4 mm) high minimum and 1/2 inch (13 mm) high maximum shall be beveled with a slope not steeper than 1:2.

2010 ADAS Section 303.2

Changes in level of 1/4 inch (6.4 mm) high maximum shall be permitted to be vertical.

2022 CBC 11B Section 11B-303.2

Changes in level of 1/4 inch (6.4 mm) high maximum shall be permitted to be vertical and without edge treatment.

2022 CBC 11B Section 11B-303.3

Changes in level between 1/4 inch (6.4 mm) high minimum and 1/2 inch (12.7 mm) high maximum shall be beveled with a slope not steeper than 1:2.

Citation:

As Built:

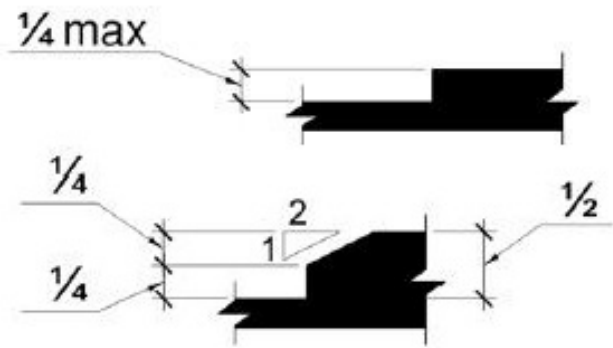
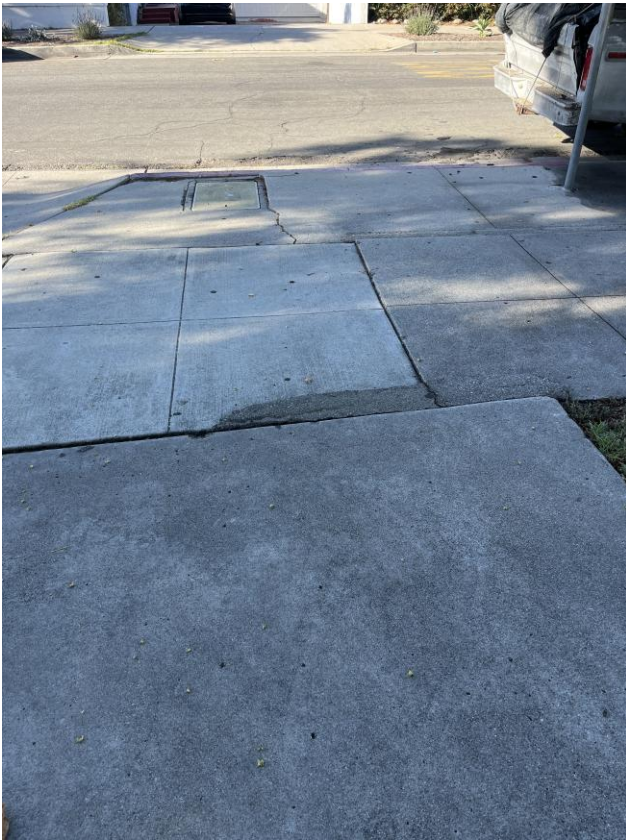
2010 ADAS Section: 303.3, 303.2 N/A

2022 CBC 11B Section:
11B-303.2, 11B-303.3

Recommendation:

N/A - Refer to Finding

Finding: 10 (Continued)



Accessible Routes: Exterior Accessible Routes

Finding: 11

The walkway contains abrupt vertical edges and/or variations over 1/4 inch.

1/4 inch is the maximum vertical rise. Changes in level between 1/4 inch and 1/2 inch must be beveled at 1:2 or less.

Changes in level greater than 1/2 inch must be by way of a ramp.

2010 ADAS Section 303.3

Changes in level between 1/4 inch (6.4 mm) high minimum and 1/2 inch (13 mm) high maximum shall be beveled with a slope not steeper than 1:2.

2010 ADAS Section 303.2

Changes in level of 1/4 inch (6.4 mm) high maximum shall be permitted to be vertical.

2022 CBC 11B Section 11B-303.2

Changes in level of 1/4 inch (6.4 mm) high maximum shall be permitted to be vertical and without edge treatment.

2022 CBC 11B Section 11B-303.3

Changes in level between 1/4 inch (6.4 mm) high minimum and 1/2 inch (12.7 mm) high maximum shall be beveled with a slope not steeper than 1:2.

Citation:

As Built:

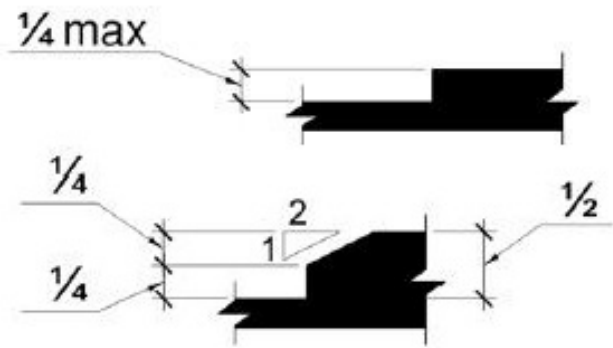
2010 ADAS Section: 303.3, 303.2 N/A

2022 CBC 11B Section:
11B-303.2, 11B-303.3

Recommendation:

N/A - Refer to Finding

Finding: 11 (Continued)



Finding: 11 Additional Finding Photos



Accessible Routes: Exterior Accessible Routes

Finding: 12

The walkway contains abrupt vertical edges and/or variations over 1/4 inch.

1/4 inch is the maximum vertical rise. Changes in level between 1/4 inch and 1/2 inch must be beveled at 1:2 or less.

Changes in level greater than 1/2 inch must be by way of a ramp.

2010 ADAS Section 303.3

Changes in level between 1/4 inch (6.4 mm) high minimum and 1/2 inch (13 mm) high maximum shall be beveled with a slope not steeper than 1:2.

2010 ADAS Section 303.2

Changes in level of 1/4 inch (6.4 mm) high maximum shall be permitted to be vertical.

2022 CBC 11B Section 11B-303.2

Changes in level of 1/4 inch (6.4 mm) high maximum shall be permitted to be vertical and without edge treatment.

2022 CBC 11B Section 11B-303.3

Changes in level between 1/4 inch (6.4 mm) high minimum and 1/2 inch (12.7 mm) high maximum shall be beveled with a slope not steeper than 1:2.

Citation:

As Built:

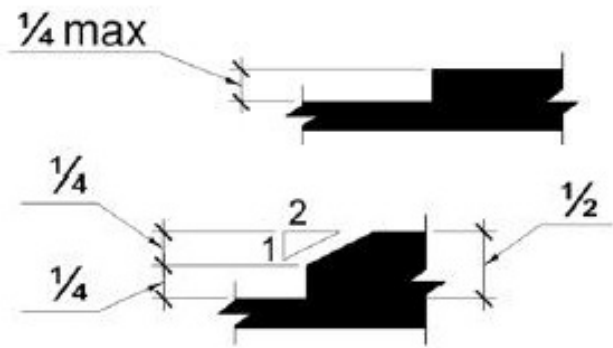
2010 ADAS Section: 303.3, 303.2 N/A

2022 CBC 11B Section:
11B-303.2, 11B-303.3

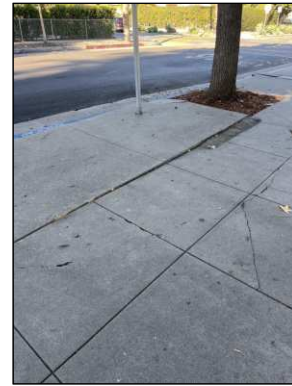
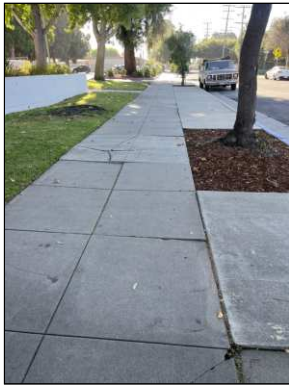
Recommendation:

N/A - Refer to Finding

Finding: 12 (Continued)



Finding: 12 Additional Finding Photos



Accessible Routes: Exterior Accessible Routes

Finding: 13

The walkway contains abrupt vertical edges and/or variations over a 1/2 inch.

1/4 inch is the maximum vertical rise. Changes in level between 1/4 inch and 1/2 inch must be beveled at 1:2 or less.

Changes in level greater than 1/2 inch must be by way of a ramp.

2010 ADAS Section 303.3

Changes in level between 1/4 inch (6.4 mm) high minimum and 1/2 inch (13 mm) high maximum shall be beveled with a slope not steeper than 1:2.

2010 ADAS Section 303.2

Changes in level of 1/4 inch (6.4 mm) high maximum shall be permitted to be vertical.

2022 CBC 11B Section 11B-303.2

Changes in level of 1/4 inch (6.4 mm) high maximum shall be permitted to be vertical and without edge treatment.

2022 CBC 11B Section 11B-303.3

Changes in level between 1/4 inch (6.4 mm) high minimum and 1/2 inch (12.7 mm) high maximum shall be beveled with a slope not steeper than 1:2.

Citation:

As Built:

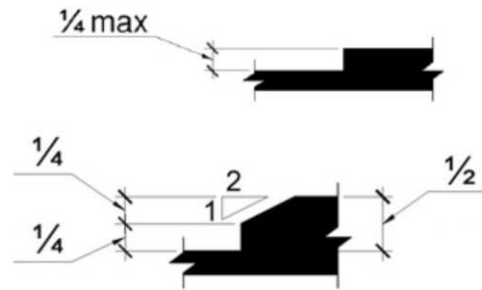
2010 ADAS Section: 303.3, 303.2 N/A

2022 CBC 11B Section:
11B-303.2, 11B-303.3

Recommendation:

N/A - Refer to Finding

Finding: 13 (Continued)



Finding: 13 Additional Finding Photos



Accessible Routes: Exterior Accessible Routes

Finding: 14

The accessible path of travel between the building and the public way on the site has cross slopes greater than 2%.

Surface cross slopes shall not exceed one unit vertical in 48 units horizontal (2-percent slope).

2010 ADAS Section 403.3

The running slope of walking surfaces shall not be steeper than 1:20. The cross slope of walking surfaces shall not be steeper than 1:48.

2022 CBC 11B Section 11B-403.3

The running slope of walking surfaces shall not be steeper than 1:20. The cross slope of walking surfaces shall not be steeper than 1:48.

Citation:

2010 ADAS Section: 403.3

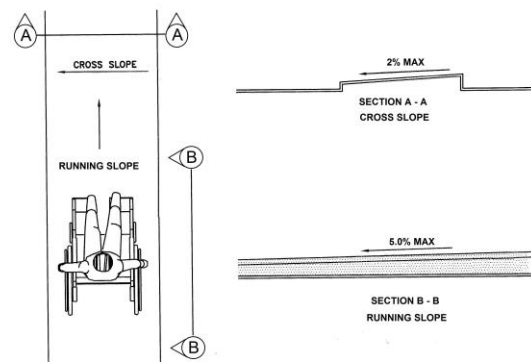
As Built:

N/A

2022 CBC 11B Section:
11B-403.3

Recommendation:

N/A - Refer to Finding



Finding: 14 Additional Finding Photos



Accessible Routes: Exterior Accessible Routes

Finding: 15

The accessible path of travel between the building and the public way on the site has cross slopes greater than 2%.

Surface cross slopes shall not exceed one unit vertical in 48 units horizontal (2-percent slope).

2010 ADAS Section 403.3

The running slope of walking surfaces shall not be steeper than 1:20. The cross slope of walking surfaces shall not be steeper than 1:48.

2022 CBC 11B Section 11B-403.3

The running slope of walking surfaces shall not be steeper than 1:20. The cross slope of walking surfaces shall not be steeper than 1:48.

Citation:

2010 ADAS Section: 403.3

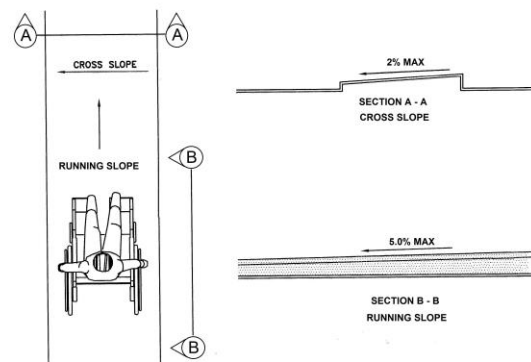
As Built:

N/A

2022 CBC 11B Section:
11B-403.3

Recommendation:

N/A - Refer to Finding



Finding: 15 Additional Finding Photos



Accessible Routes: Exterior Accessible Routes

Finding: 16

The element projects more than 4 inches into the circulation path.

Wall-mounted objects that have leading edges between 27 inches and 80 inches from the floor must not project more than 4 inches into the circulation path. Protruding objects that extend to the floor or within 27 inches of the floor are cane detectable and are therefore not hazardous. Where it is necessary or desirable to have objects protrude from the wall, a manner of cane detection must be provided.

2010 ADAS Section 307.2

Objects with leading edges more than 27 inches (685 mm) and not more than 80 inches (2030 mm) above the finish floor or ground shall protrude 4 inches (100 mm) maximum horizontally into the circulation path.

2022 CBC 11B Section 11B-307.2

Objects with leading edges more than 27 inches (686 mm) and not more than 80 inches (2032 mm) above the finish floor or ground shall protrude 4 inches (102 mm) maximum horizontally into the circulation path.

Citation:

2010 ADAS Section: 307.2

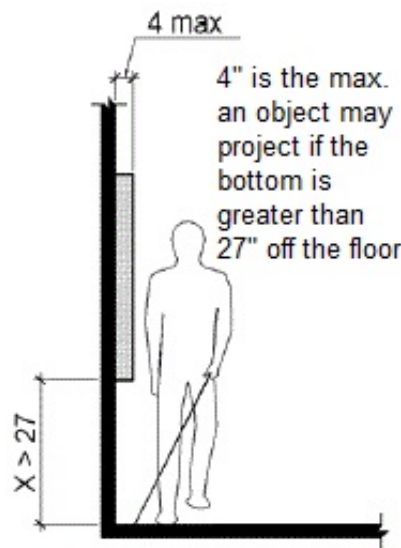
As Built:

N/A

2022 CBC 11B Section:
11B-307.2

Recommendation:

N/A - Refer to Finding



Finding: 16 Additional Finding Photos



Accessible Routes: Exterior Accessible Routes

Finding: 17

There is no accessible route to the accessible element.

At least one accessible route shall connect accessible buildings, accessible facilities, accessible elements, and accessible spaces that are on the same site.

2010 ADAS Section 206.2.2

At least one accessible route shall connect accessible buildings, accessible facilities, accessible elements, and accessible spaces that are on the same site.

2022 CBC 11B Section 11B-206.2.2

At least one accessible route shall connect accessible buildings, accessible facilities, accessible elements, and accessible spaces that are on the same site.

Citation:

2010 ADAS Section: 206.2.2

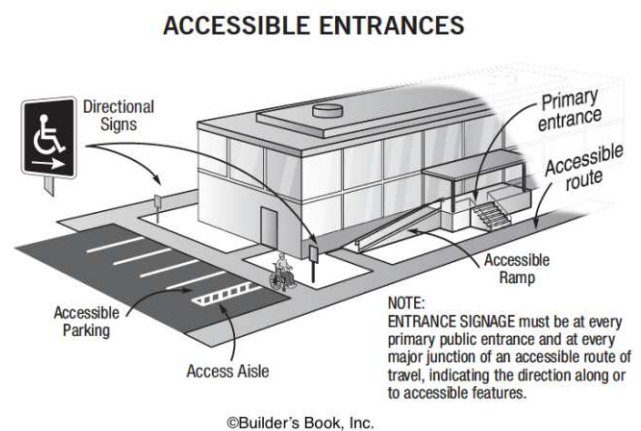
2022 CBC 11B Section:
11B-206.2.2

As Built:

ballot drop off and book drop off
need level landing and
accessible route to element

Recommendation:

install the drop off boxes on an accessible route with clear floor space at the deposit location



Finding: 17 Additional Finding Photos



Accessible Routes: Exterior Accessible Routes

Finding: 18

The handrail does not extend past the ramp.

Handrails must be between 34 inches and 38 inches above the ramp surface and must extend beyond the top and bottom of the ramp run 12 inches horizontally. The 12 inches horizontal extensions must not include the radius at the top end of round handrails. Extensions shall return to a wall, guard, or the landing surface, or shall be continuous to the handrail of an adjacent ramp run.

2010 ADAS Section 505.10.1

Ramp handrails shall extend horizontally above the landing for 12 inches (305 mm) minimum beyond the top and bottom of ramp runs. Extensions shall return to a wall, guard, or the landing surface, or shall be continuous to the handrail of an adjacent ramp run.

2022 CBC 11B Section 11B-505.10.1

Ramp handrails shall extend horizontally above the landing for 12 inches (305 mm) minimum beyond the top and bottom of ramp runs. Extensions shall return to a wall, guard, or the landing surface, or shall be continuous to the handrail of an adjacent ramp run.

Citation:

2010 ADAS Section: 505.10.1

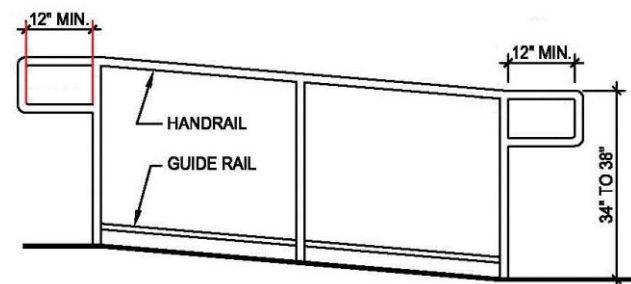
2022 CBC 11B Section:
11B-505.10.1

As Built:

hand rails do not run the entire
length of ramp ramp do to back
of school with non compliant
gate

Recommendation:

not sure if this is part of the property, leads to the school



Finding: 18 Additional Finding Photos



Accessible Routes: Exterior Accessible Routes

Finding: 19

The ramp run and landing do not have compliant/required edge protection.

A curb, or barrier shall be provided that prevents the passage of a 4 inch diameter sphere, where any portion of the sphere is within 4 inches of the finish floor or ground surface. To prevent wheel entrapment, the curb or barrier shall provide a continuous and uninterrupted barrier along the length of the ramp.

2022 CBC 11B Section 11B-405.9.2

A curb or barrier shall be provided that prevents the passage of a 4 inch (102 mm) diameter sphere, where any portion of the sphere is within 4 inches (102 mm) of the finish floor or ground surface. To prevent wheel entrapment, the curb or barrier shall provide a continuous and uninterrupted barrier along the length of the ramp.

Citation:

2022 CBC 11B Section:
11B-405.9.2

As Built:

N/A

Recommendation:

not sure if this is part of the property or not. Leads to the school



Accessible Routes: Entrances

Finding: 20

The floor mat at the door is not secured in place.

If carpet or carpet tile is used on a ground or floor surface, then it shall be securely attached; have a firm cushion, pad or backing or no cushion or pad; and have a level loop, textured loop, level-cut pile or level-cut/uncut pile texture. The maximum pile height shall be 1/2 inch. Exposed edges of carpet shall be fastened to floor surfaces and have trim along the entire length of the exposed edge. Recessed doormats shall be adequately anchored to prevent interference with wheelchair traffic.

2010 ADAS Section 302.2

Carpet or carpet tile shall be securely attached and shall have a firm cushion, pad, or backing or no cushion or pad. Carpet or carpet tile shall have a level loop, textured loop, level cut pile, or level cut/uncut pile texture. Pile height shall be 1/2 inch (13 mm) maximum. Exposed edges of carpet shall be fastened to floor surfaces and shall have trim on the entire length of the exposed edge. Carpet edge trim shall comply with 303.

2022 CBC 11B Section 11B-302.2

Carpet or carpet tile shall be securely attached and shall have a firm cushion, pad, or backing or no cushion or pad. Carpet or carpet tile shall have a level loop, textured loop, level cut pile, level cut/uncut pile texture. Pile height shall be 1/2 inch (12.7 mm) maximum. Exposed edges of carpet shall be fastened to floor surfaces and shall have trim on the entire length of the exposed edge. Carpet edge trim shall comply with Section 11 B-303.

Citation:

As Built:

2010 ADAS Section: 302.2

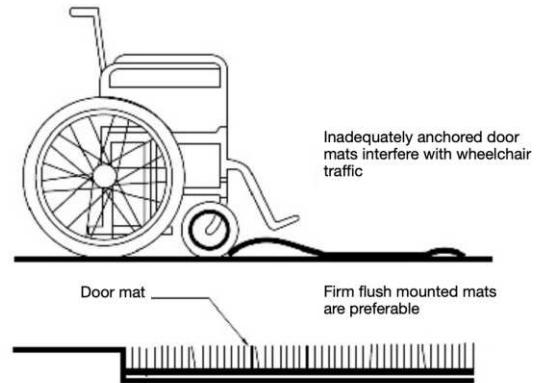
N/A

2022 CBC 11B Section:
11B-302.2

Recommendation:

N/A - Refer to Finding

Finding: 20 (Continued)



Finding: 20 Additional Finding Photos



Accessible Routes: Entrances

Finding: 21

The entrance is not accessible and is missing signage. An identification sign identifying that this entrance is not accessible and directional signage pointing to the accessible entrance is required.

When a directional sign is required, it should be located to minimize backtracking. In some cases, this could mean locating a sign at the beginning of a route, not just at the inaccessible entrances to a building.

2010 ADAS Section 216.6

Where not all entrances comply with 404, entrances complying with 404 shall be identified by the International Symbol of Accessibility complying with 703.7.2.1. Directional signs complying with 703.5 that indicate the location of the nearest entrance complying with 404 shall be provided at entrances that do not comply with 404.

2022 CBC 11B Section 11B-216.6

In existing buildings and facilities where not all entrances comply with Section 11B-404, entrances complying with Section 11B-404 shall be identified by the International Symbol of Accessibility complying with Section 11B-703.7.2.1. Directional signs complying with Section 11B-703.5 that indicate the location of the nearest entrance complying with Section 11B-404 shall be provided at entrances that do not comply with Section 11B-404. Directional signs complying with Section 11B-703.5, including the International Symbol of Accessibility complying with Section 11B-703.7.2.1, indicating the accessible route to the nearest accessible entrance shall be provided at junctions when the accessible route diverges from the regular circulation path.

Citation:**As Built:**

2010 ADAS Section: 216.6

N/A

2022 CBC 11B Section:
11B-216.6

Recommendation:

N/A - Refer to Finding

Finding: 21 (Continued)



Accessible Routes: Entrances

Finding: 22

The entrance is not accessible and is missing signage. An identification sign identifying that this entrance is not accessible and directional signage pointing to the accessible entrance is required.

When a directional sign is required, it should be located to minimize backtracking. In some cases, this could mean locating a sign at the beginning of a route, not just at the inaccessible entrances to a building.

2010 ADAS Section 216.6

Where not all entrances comply with 404, entrances complying with 404 shall be identified by the International Symbol of Accessibility complying with 703.7.2.1. Directional signs complying with 703.5 that indicate the location of the nearest entrance complying with 404 shall be provided at entrances that do not comply with 404.

2022 CBC 11B Section 11B-216.6

In existing buildings and facilities where not all entrances comply with Section 11B-404, entrances complying with Section 11B-404 shall be identified by the International Symbol of Accessibility complying with Section 11B-703.7.2.1. Directional signs complying with Section 11B-703.5 that indicate the location of the nearest entrance complying with Section 11B-404 shall be provided at entrances that do not comply with Section 11B-404. Directional signs complying with Section 11B-703.5, including the International Symbol of Accessibility complying with Section 11B-703.7.2.1, indicating the accessible route to the nearest accessible entrance shall be provided at junctions when the accessible route diverges from the regular circulation path.

Citation:**As Built:**

2010 ADAS Section: 216.6

N/A

2022 CBC 11B Section:
11B-216.6

Recommendation:

N/A - Refer to Finding

Finding: 22 *(Continued)*



Accessible Routes: Entrances

Finding: 23

A tactile EXIT sign is missing at the door.

Wall signs identifying exits shall have characters raised 1/32 inch minimum and shall be uppercase characters a minimum of 5/8 inch and a maximum of 2 inches high. Braille shall be placed directly below the tactile characters; flush left or centered. Signs shall be located a minimum of 48 inches above floor, measured from the baseline of the lowest line of Braille and 60 inches maximum above the finish floor or ground surface, measured from the baseline of the highest line of raised characters.

Where a tactile sign is provided at a door, the sign shall be located at the latch side. Where a tactile sign is provided at double door the sign shall be located to the right of the right hand door. Where there is no wall space at the latch side of a single door or at the right side of double doors, signs shall be located on the nearest adjacent wall.

2022 CBC 11B Section 11B-216.4.1

Signs required by Chapter 10, Section 1013.4 at doors to exit passageways, exit discharge, and exit stairways shall comply with Sections 11B- 103.1, 11B-703.2, 11B-703.3 and 11B-703.5.

Citation:

As Built:

2022 CBC 11B Section:
11B-216.4.1

N/A

Recommendation:

Typical throughout

Install tactile exit and exit route signs at all egress doors



Accessible Routes: Entrances

Finding: 24

A tactile EXIT sign is missing at the door.

Wall signs identifying exits shall have characters raised 1/32 inch minimum and shall be uppercase characters a minimum of 5/8 inch and a maximum of 2 inches high. Braille shall be placed directly below the tactile characters; flush left or centered. Signs shall be located a minimum of 48 inches above floor, measured from the baseline of the lowest line of Braille and 60 inches maximum above the finish floor or ground surface, measured from the baseline of the highest line of raised characters.

Where a tactile sign is provided at a door, the sign shall be located at the latch side. Where a tactile sign is provided at double door the sign shall be located to the right of the right hand door. Where there is no wall space at the latch side of a single door or at the right side of double doors, signs shall be located on the nearest adjacent wall.

2022 CBC 11B Section 11B-216.4.1

Signs required by Chapter 10, Section 1013.4 at doors to exit passageways, exit discharge, and exit stairways shall comply with Sections 11B- 103.1, 11B-703.2, 11B-703.3 and 11B-703.5.

Citation:

As Built:

2022 CBC 11B Section:
11B-216.4.1

N/A

Recommendation:

Typical throughout

Install tactile exit and exit route signs at all egress doors



Accessible Routes: Entrances

Finding: 25

The door has a door stop which prevents it from having a smooth surface at the bottom.

Swinging door surfaces within 10 inches of the finish floor or ground measured vertically must have a smooth surface on the push side extending the full width of the door. Parts creating horizontal or vertical joints in these surfaces shall be within 1/16 inch of the same plane as the other. Cavities created by added kick plates shall be capped. This is required to allow those that use wheelchairs to use their footrests to push the door open without getting trapped or injured by the gate material. All gates, including ticket gates, shall meet all applicable specifications for doors.

2010 ADAS Section 404.2.10

Swinging door and gate surfaces within 10 inches (255 mm) of the finish floor or ground measured vertically shall have a smooth surface on the push side extending the full width of the door or gate. Parts creating horizontal or vertical joints in these surfaces shall be within 1/16 inch (1.6 mm) of the same plane as the other. Cavities created by added kick plates shall be capped.

2022 CBC 11B Section 11B-404.2.10

Swinging door and gate surfaces within 10 inches (254 mm) of the finish floor or ground measured vertically shall have a smooth surface on the push side extending the full width of the door or gate. Parts creating horizontal or vertical joints in these surfaces shall be within 1/16 inch (1.6 mm) of the same plane as the other and be free of sharp or abrasive edges. Cavities created by added kick plates shall be capped.

Citation:

As Built:

2010 ADAS Section: 404.2.10

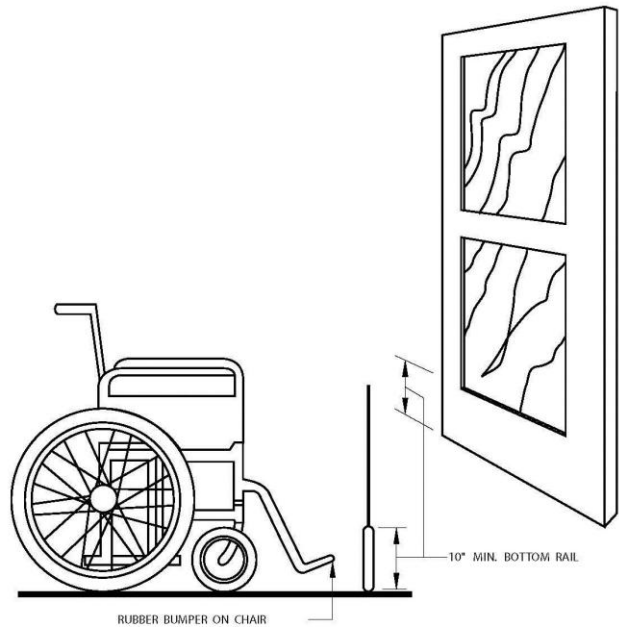
N/A

2022 CBC 11B Section:
11B-404.2.10

Recommendation:

remove door stop

Finding: 25 (Continued)



Finding: 25 Additional Finding Photos



Library : Main Library**Finding: 26**

The door has a door stop which prevents it from having a smooth surface at the bottom.

Swinging door surfaces within 10 inches of the finish floor or ground measured vertically must have a smooth surface on the push side extending the full width of the door. Parts creating horizontal or vertical joints in these surfaces shall be within 1/16 inch of the same plane as the other. Cavities created by added kick plates shall be capped. This is required to allow those that use wheelchairs to use their footrests to push the door open without getting trapped or injured by the gate material. All gates, including ticket gates, shall meet all applicable specifications for doors.

2010 ADAS Section 404.2.10

Swinging door and gate surfaces within 10 inches (255 mm) of the finish floor or ground measured vertically shall have a smooth surface on the push side extending the full width of the door or gate. Parts creating horizontal or vertical joints in these surfaces shall be within 1/16 inch (1.6 mm) of the same plane as the other. Cavities created by added kick plates shall be capped.

2022 CBC 11B Section 11B-404.2.10

Swinging door and gate surfaces within 10 inches (254 mm) of the finish floor or ground measured vertically shall have a smooth surface on the push side extending the full width of the door or gate. Parts creating horizontal or vertical joints in these surfaces shall be within 1/16 inch (1.6 mm) of the same plane as the other and be free of sharp or abrasive edges. Cavities created by added kick plates shall be capped.

Citation:**As Built:**

2010 ADAS Section: 404.2.10

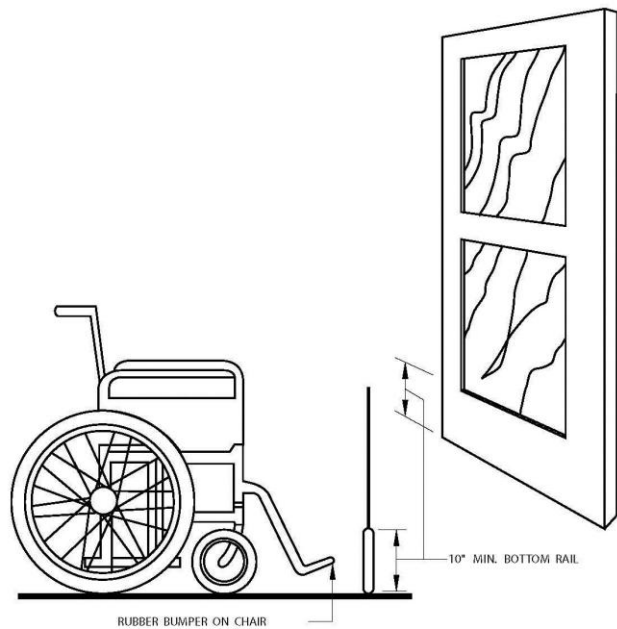
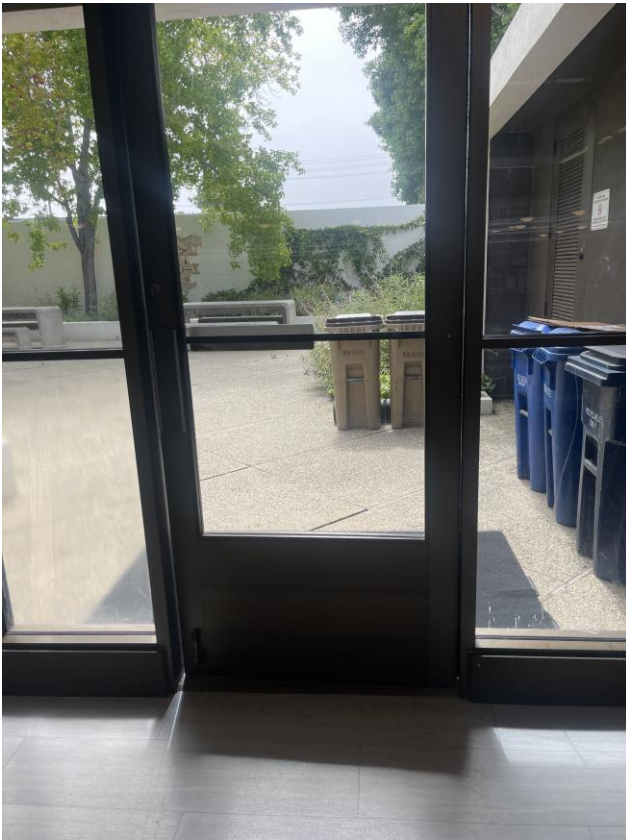
N/A

2022 CBC 11B Section:
11B-404.2.10

Recommendation:

remove door stop

Finding: 26 (Continued)



Finding: 26 Additional Finding Photos



Library : Main Library**Finding: 27**

The floor mat at the door is not secured in place.

If carpet or carpet tile is used on a ground or floor surface, then it shall be securely attached; have a firm cushion, pad or backing or no cushion or pad; and have a level loop, textured loop, level-cut pile or level-cut/uncut pile texture. The maximum pile height shall be 1/2 inch. Exposed edges of carpet shall be fastened to floor surfaces and have trim along the entire length of the exposed edge. Recessed doormats shall be adequately anchored to prevent interference with wheelchair traffic.

2010 ADAS Section 302.2

Carpet or carpet tile shall be securely attached and shall have a firm cushion, pad, or backing or no cushion or pad. Carpet or carpet tile shall have a level loop, textured loop, level cut pile, or level cut/uncut pile texture. Pile height shall be 1/2 inch (13 mm) maximum. Exposed edges of carpet shall be fastened to floor surfaces and shall have trim on the entire length of the exposed edge. Carpet edge trim shall comply with 303.

2022 CBC 11B Section 11B-302.2

Carpet or carpet tile shall be securely attached and shall have a firm cushion, pad, or backing or no cushion or pad. Carpet or carpet tile shall have a level loop, textured loop, level cut pile, level cut/uncut pile texture. Pile height shall be 1/2 inch (12.7 mm) maximum. Exposed edges of carpet shall be fastened to floor surfaces and shall have trim on the entire length of the exposed edge. Carpet edge trim shall comply with Section 11 B-303.

Citation:**As Built:**

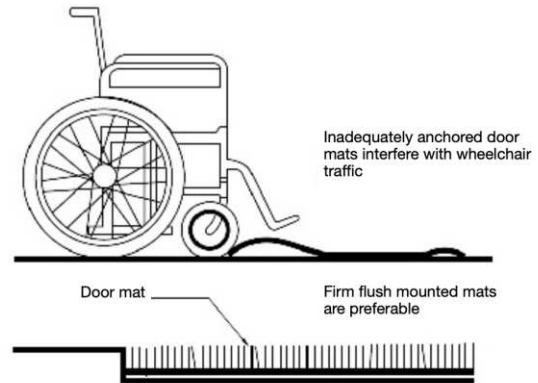
2010 ADAS Section: 302.2

N/A

2022 CBC 11B Section:
11B-302.2

Recommendation:

although this is not a construction related item, it should be part of your ADA program to secure all carpets and rugs

Finding: 27 (Continued)

Library : Main Library**Finding: 28**

The carpet, rug, or mat is not secured in place.

If carpet or carpet tile is used on a ground or floor surface, then it shall be securely attached; have a firm cushion, pad or backing or no cushion or pad; and have a level loop, textured loop, level-cut pile or level-cut/uncut pile texture. The maximum pile height shall be 1/2 inch. Exposed edges of carpet shall be fastened to floor surfaces and have trim along the entire length of the exposed edge. Recessed doormats shall be adequately anchored to prevent interference with wheelchair traffic.

2010 ADAS Section 302.2

Carpet or carpet tile shall be securely attached and shall have a firm cushion, pad, or backing or no cushion or pad. Carpet or carpet tile shall have a level loop, textured loop, level cut pile, or level cut/uncut pile texture. Pile height shall be 1/2 inch (13 mm) maximum. Exposed edges of carpet shall be fastened to floor surfaces and shall have trim on the entire length of the exposed edge. Carpet edge trim shall comply with 303.

2022 CBC 11B Section 11B-302.2

Carpet or carpet tile shall be securely attached and shall have a firm cushion, pad, or backing or no cushion or pad. Carpet or carpet tile shall have a level loop, textured loop, level cut pile, level cut/uncut pile texture. Pile height shall be 1/2 inch (12.7 mm) maximum. Exposed edges of carpet shall be fastened to floor surfaces and shall have trim on the entire length of the exposed edge. Carpet edge trim shall comply with Section 11 B-303.

Citation:**As Built:**

2010 ADAS Section: 302.2

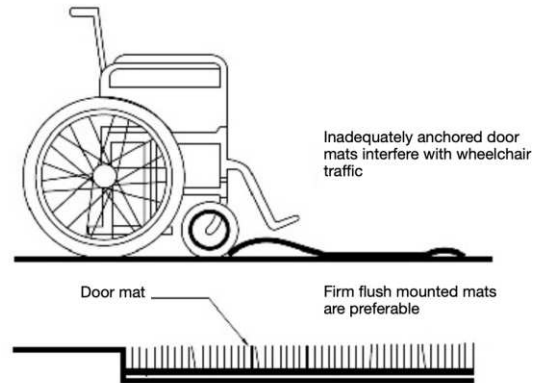
N/A

2022 CBC 11B Section:
11B-302.2

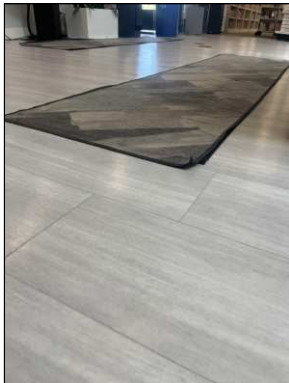
Recommendation:

Although this is not a Construction related item, it is recommended to secure all carpets and rugs

Finding: 28 (Continued)



Finding: 28 Additional Finding Photos



Library : Main Library**Finding: 29**

A tactile EXIT ROUTE sign is missing on the strike side of the door.

Each exit access door from an interior room or area (with an exit sign) shall be identified by a tactile exit sign with the words, "EXIT ROUTE."

Wall signs identifying exits shall have characters raised 1/32 inch minimum and shall be uppercase characters a minimum of 5/8 inch and a maximum of 2 inches high. Braille shall be placed directly below the tactile characters; flush left or centered. Signs shall be located a minimum of 48 inches above floor, measured from the baseline of the lowest Braille characters and 60 inches maximum above the finish floor or ground surface, measured from the baseline of the highest line of raised characters.

2022 CBC 11B Section 11B-216.4.1

Signs required by Chapter 10, Section 1013.4 at doors to exit passageways, exit discharge, and exit stairways shall comply with Sections 11B- 103.1, 11B-703.2, 11B-703.3 and 11B-703.5.

Citation:

2022 CBC 11B Section:
11B-216.4.1

As Built:

no EXIT ROUTE tactile signs

Recommendation:

Typical throughout

Install tactile exit and exit route signs at all egress doors



Library : East Patio**Finding: 30**

The grate openings are greater than 1/2 inch and are parallel to the direction of travel.

Openings in floor or ground surfaces shall not allow passage of a sphere more than 1/2 inch diameter. Elongated openings shall be placed so that the long dimension is perpendicular to the dominant direction of travel.

2010 ADAS Section 302.3

Openings in floor or ground surfaces shall not allow passage of a sphere more than 1/2 inch (13 mm) diameter except as allowed in 407.4.3, 409.4.3, 410.4, 810.5.3 and 810.10. Elongated openings shall be placed so that the long dimension is perpendicular to the dominant direction of travel.

2022 CBC 11B Section 11B-302.3

Openings in floor or ground surfaces shall not allow passage of a sphere more than 1/2 inch (12.7 mm) diameter except as allowed in Sections 11B-407.4.3, 11 B-409.4.3, 11B-410.4, 11B-810.5.3 and 11B-810.10. Elongated openings shall be placed so that the long dimension is perpendicular to the dominant direction of travel.

Citation:

2010 ADAS Section: 302.3

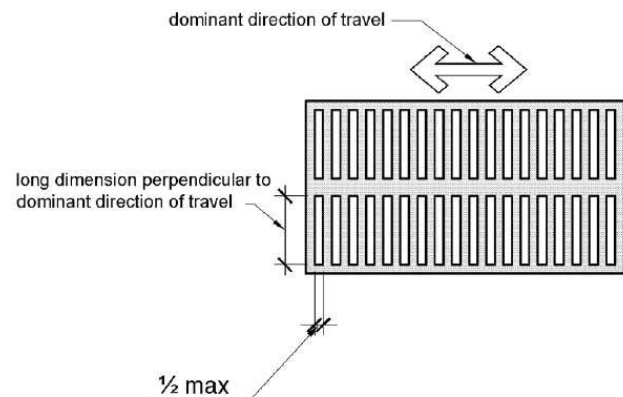
2022 CBC 11B Section:
11B-302.3

As Built:

assembly area

Recommendation:

install covers with grates 1/2" or smaller. In a general assembly area such as this, recommend 1/2" holes instead of slots



Finding: 30 Additional Finding Photos



Library : East Patio

Finding: 31

The maneuvering clearance on the pull side of the door does not extend beyond the latch side of the door.

Maneuvering clearance for exterior doors on the pull side must be flat (2% max. slope in any direction) for a minimum distance of 60 inches in the direction of travel. The width of the landing must be as wide as the door plus an additional 24 inches on the latch side. This latch side clearance must also be flat (2% max. slope in any direction) and clear of obstructions.

2022 CBC 11B Section 11B-404.2.4.1

Swinging doors and gates shall have maneuvering clearances complying with Table 11B-404.2.4.1.

Citation:

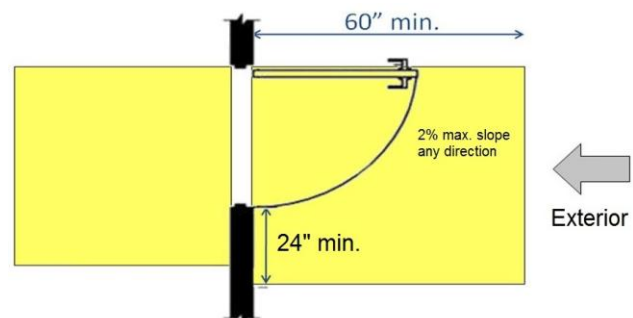
2022 CBC 11B Section:
11B-404.2.4.1

As Built:

non accessible entrance

Recommendation:

install signage showing where accessible entrance is located



Finding: 31 Additional Finding Photos



Library : East Patio

Finding: 32

The door must have a smooth surface within 10 inches of the floor on the push side.

Swinging door surfaces within 10 inches of the finish floor or ground measured vertically must have a smooth surface on the push side extending the full width of the door. Parts creating horizontal or vertical joints in these surfaces shall be within 1/16 inch of the same plane as the other. All gates, including ticket gates, shall meet all applicable specifications for doors.

2010 ADAS Section 404.2.10

Swinging door and gate surfaces within 10 inches (255 mm) of the finish floor or ground measured vertically shall have a smooth surface on the push side extending the full width of the door or gate. Parts creating horizontal or vertical joints in these surfaces shall be within 1/16 inch (1.6 mm) of the same plane as the other. Cavities created by added kick plates shall be capped.

2022 CBC 11B Section 11B-404.2.10

Swinging door and gate surfaces within 10 inches (254 mm) of the finish floor or ground measured vertically shall have a smooth surface on the push side extending the full width of the door or gate. Parts creating horizontal or vertical joints in these surfaces shall be within 1/16 inch (1.6 mm) of the same plane as the other and be free of sharp or abrasive edges. Cavities created by added kick plates shall be capped.

Citation:

As Built:

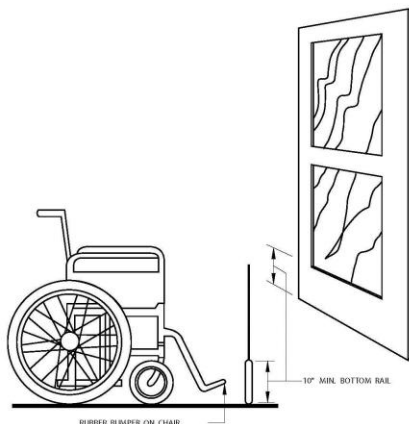
2010 ADAS Section: 404.2.10

N/A

2022 CBC 11B Section:
11B-404.2.10

Recommendation:

non accessible entrance, install signage stating where accessible entrance is located



Library : East Patio**Finding: 33**

The door opening does not provide at least 32 inches between the face of the door and the opposite stop.

Door openings shall provide a clear width of 32 inches minimum. Clear openings of doorways with swinging doors shall be measured between the face of the door and the stop, with the door open 90 degrees.

2010 ADAS Section 404.2.3

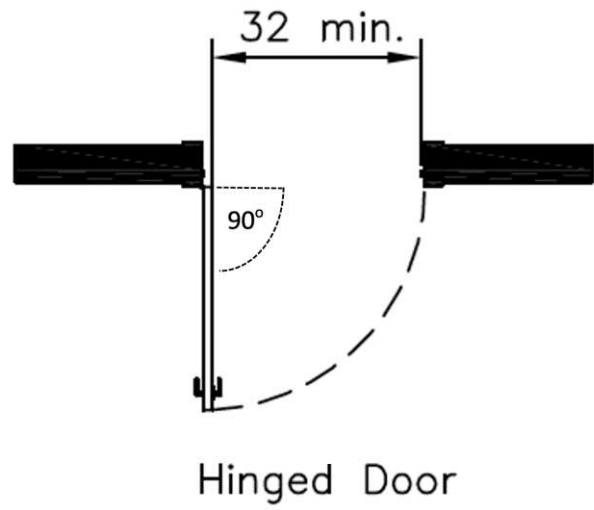
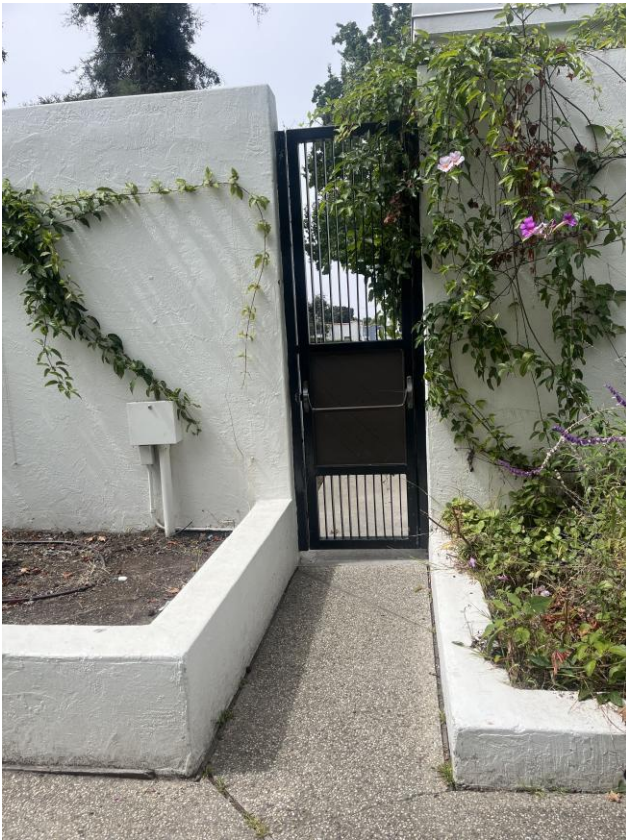
Door openings shall provide a clear width of 32 inches (815 mm) minimum. Clear openings of doorways with swinging doors shall be measured between the face of the door and the stop, with the door open 90 degrees. Openings more than 24 inches (610 mm) deep shall provide a clear opening of 36 inches (915 mm) minimum. There shall be no projections into the required clear opening width lower than 34 inches (865 mm) above the finish floor or ground. Projections into the clear opening width between 34 inches (865 mm) and 80 inches (2030 mm) above the finish floor or ground shall not exceed 4 inches (100 mm).

2022 CBC 11B Section 11B-404.2.3

Door openings shall provide a clear width of 32 inches (813 mm) minimum. Clear openings of doorways with swinging doors shall be measured between the face of the door and the stop, with the door open 90 degrees. Openings more than 24 inches (610 mm) deep shall provide a clear opening of 36 inches (914 mm) minimum. There shall be no projections into the required clear opening width lower than 34 inches (864 mm) above the finish floor or ground. Projections into the clear opening width between 34 inches (864 mm) and 80 inches (2032 mm) above the finish floor or ground shall not exceed 4 inches (102 mm).

Citation:**As Built:****2010 ADAS Section: 404.2.3****N/A****2022 CBC 11B Section:
11B-404.2.3****Recommendation:****non accessible entrance/exit****Install signage showing location of accessible entrance**

Finding: 33 (Continued)



Library : East Patio**Finding: 34**

The entrance is not accessible and is missing signage. An identification sign identifying that this entrance is not accessible and directional signage pointing to the accessible entrance is required.

When a directional sign is required, it should be located to minimize backtracking. In some cases, this could mean locating a sign at the beginning of a route, not just at the inaccessible entrances to a building.

2010 ADAS Section 216.6

Where not all entrances comply with 404, entrances complying with 404 shall be identified by the International Symbol of Accessibility complying with 703.7.2.1. Directional signs complying with 703.5 that indicate the location of the nearest entrance complying with 404 shall be provided at entrances that do not comply with 404.

2022 CBC 11B Section 11B-216.6

In existing buildings and facilities where not all entrances comply with Section 11B-404, entrances complying with Section 11B-404 shall be identified by the International Symbol of Accessibility complying with Section 11B-703.7.2.1. Directional signs complying with Section 11B-703.5 that indicate the location of the nearest entrance complying with Section 11B-404 shall be provided at entrances that do not comply with Section 11B-404. Directional signs complying with Section 11B-703.5, including the International Symbol of Accessibility complying with Section 11B-703.7.2.1, indicating the accessible route to the nearest accessible entrance shall be provided at junctions when the accessible route diverges from the regular circulation path.

Citation:**As Built:**

2010 ADAS Section: 216.6

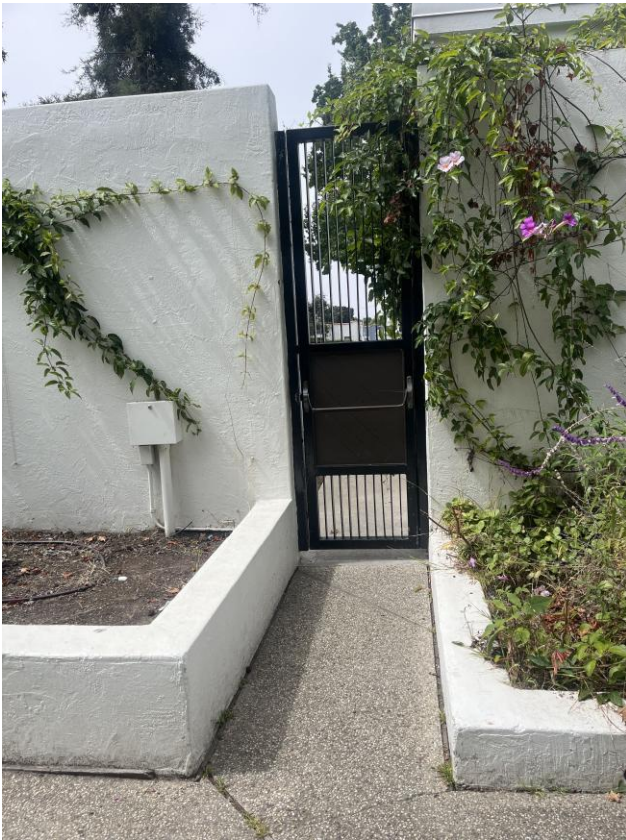
N/A

**2022 CBC 11B Section:
11B-216.6**

Recommendation:

N/A - Refer to Finding

Finding: 34 (Continued)



Library : North Patio

Finding: 35

The door opening does not provide at least 32 inches between the face of the door and the opposite stop.

Door openings shall provide a clear width of 32 inches minimum. Clear openings of doorways with swinging doors shall be measured between the face of the door and the stop, with the door open 90 degrees.

2010 ADAS Section 404.2.3

Door openings shall provide a clear width of 32 inches (815 mm) minimum. Clear openings of doorways with swinging doors shall be measured between the face of the door and the stop, with the door open 90 degrees. Openings more than 24 inches (610 mm) deep shall provide a clear opening of 36 inches (915 mm) minimum. There shall be no projections into the required clear opening width lower than 34 inches (865 mm) above the finish floor or ground. Projections into the clear opening width between 34 inches (865 mm) and 80 inches (2030 mm) above the finish floor or ground shall not exceed 4 inches (100 mm).

2022 CBC 11B Section 11B-404.2.3

Door openings shall provide a clear width of 32 inches (813 mm) minimum. Clear openings of doorways with swinging doors shall be measured between the face of the door and the stop, with the door open 90 degrees. Openings more than 24 inches (610 mm) deep shall provide a clear opening of 36 inches (914 mm) minimum. There shall be no projections into the required clear opening width lower than 34 inches (864 mm) above the finish floor or ground. Projections into the clear opening width between 34 inches (864 mm) and 80 inches (2032 mm) above the finish floor or ground shall not exceed 4 inches (102 mm).

Citation:

2010 ADAS Section: 404.2.3

2022 CBC 11B Section:
11B-404.2.3

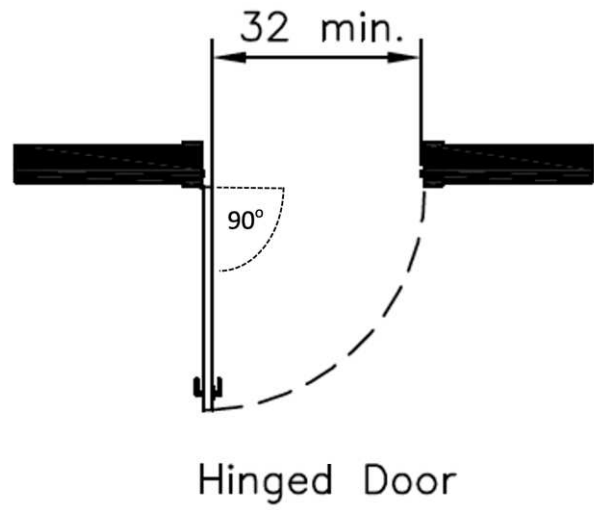
As Built:

appears to be a required exit

Recommendation:

N/A - Refer to Finding

Finding: 35 (Continued)



Library : North Patio

Finding: 36

The door must have a smooth surface within 10 inches of the floor on the push side.

Swinging door surfaces within 10 inches of the finish floor or ground measured vertically must have a smooth surface on the push side extending the full width of the door. Parts creating horizontal or vertical joints in these surfaces shall be within 1/16 inch of the same plane as the other. All gates, including ticket gates, shall meet all applicable specifications for doors.

2010 ADAS Section 404.2.10

Swinging door and gate surfaces within 10 inches (255 mm) of the finish floor or ground measured vertically shall have a smooth surface on the push side extending the full width of the door or gate. Parts creating horizontal or vertical joints in these surfaces shall be within 1/16 inch (1.6 mm) of the same plane as the other. Cavities created by added kick plates shall be capped.

2022 CBC 11B Section 11B-404.2.10

Swinging door and gate surfaces within 10 inches (254 mm) of the finish floor or ground measured vertically shall have a smooth surface on the push side extending the full width of the door or gate. Parts creating horizontal or vertical joints in these surfaces shall be within 1/16 inch (1.6 mm) of the same plane as the other and be free of sharp or abrasive edges. Cavities created by added kick plates shall be capped.

Citation:

As Built:

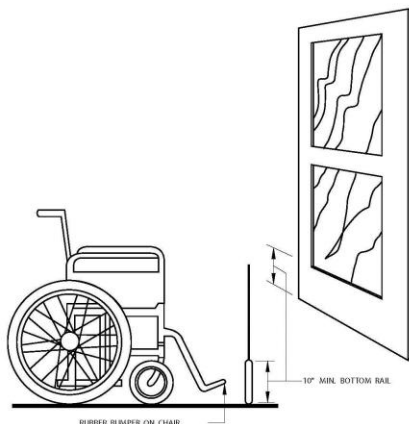
2010 ADAS Section: 404.2.10

N/A

2022 CBC 11B Section:
11B-404.2.10

Recommendation:

N/A - Refer to Finding



Library : North Patio**Finding: 37**

The entrance is not accessible and is missing signage. An identification sign identifying that this entrance is not accessible and directional signage pointing to the accessible entrance is required.

When a directional sign is required, it should be located to minimize backtracking. In some cases, this could mean locating a sign at the beginning of a route, not just at the inaccessible entrances to a building.

2010 ADAS Section 216.6

Where not all entrances comply with 404, entrances complying with 404 shall be identified by the International Symbol of Accessibility complying with 703.7.2.1. Directional signs complying with 703.5 that indicate the location of the nearest entrance complying with 404 shall be provided at entrances that do not comply with 404.

2022 CBC 11B Section 11B-216.6

In existing buildings and facilities where not all entrances comply with Section 11B-404, entrances complying with Section 11B-404 shall be identified by the International Symbol of Accessibility complying with Section 11B-703.7.2.1. Directional signs complying with Section 11B-703.5 that indicate the location of the nearest entrance complying with Section 11B-404 shall be provided at entrances that do not comply with Section 11B-404. Directional signs complying with Section 11B-703.5, including the International Symbol of Accessibility complying with Section 11B-703.7.2.1, indicating the accessible route to the nearest accessible entrance shall be provided at junctions when the accessible route diverges from the regular circulation path.

Citation:**As Built:**

2010 ADAS Section: 216.6

N/A

**2022 CBC 11B Section:
11B-216.6**

Recommendation:

N/A - Refer to Finding

Finding: 37 (Continued)



Library : North Patio

Finding: 38

The grate openings are greater than 1/2 inch and are parallel to the direction of travel.

Openings in floor or ground surfaces shall not allow passage of a sphere more than 1/2 inch diameter. Elongated openings shall be placed so that the long dimension is perpendicular to the dominant direction of travel.

2010 ADAS Section 302.3

Openings in floor or ground surfaces shall not allow passage of a sphere more than 1/2 inch (13 mm) diameter except as allowed in 407.4.3, 409.4.3, 410.4, 810.5.3 and 810.10. Elongated openings shall be placed so that the long dimension is perpendicular to the dominant direction of travel.

2022 CBC 11B Section 11B-302.3

Openings in floor or ground surfaces shall not allow passage of a sphere more than 1/2 inch (12.7 mm) diameter except as allowed in Sections 11B-407.4.3, 11 B-409.4.3, 11B-410.4, 11B-810.5.3 and 11B-810.10. Elongated openings shall be placed so that the long dimension is perpendicular to the dominant direction of travel.

Citation:

As Built:

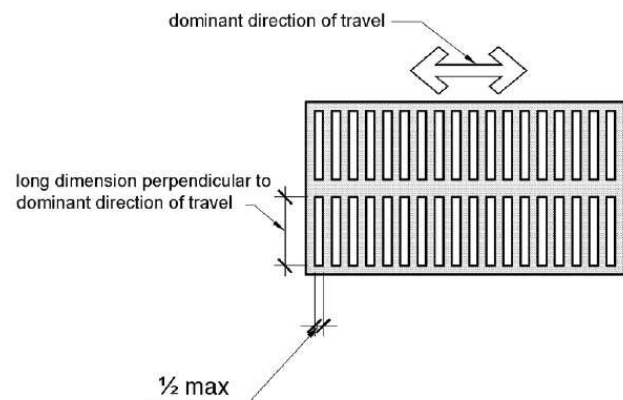
2010 ADAS Section: 302.3

N/A

2022 CBC 11B Section:
11B-302.3

Recommendation:

N/A - Refer to Finding



Finding: 38 Additional Finding Photos



Library : North Patio**Finding: 39**

The floor mat at the door is not secured in place.

If carpet or carpet tile is used on a ground or floor surface, then it shall be securely attached; have a firm cushion, pad or backing or no cushion or pad; and have a level loop, textured loop, level-cut pile or level-cut/uncut pile texture. The maximum pile height shall be 1/2 inch. Exposed edges of carpet shall be fastened to floor surfaces and have trim along the entire length of the exposed edge. Recessed doormats shall be adequately anchored to prevent interference with wheelchair traffic.

2010 ADAS Section 302.2

Carpet or carpet tile shall be securely attached and shall have a firm cushion, pad, or backing or no cushion or pad. Carpet or carpet tile shall have a level loop, textured loop, level cut pile, or level cut/uncut pile texture. Pile height shall be 1/2 inch (13 mm) maximum. Exposed edges of carpet shall be fastened to floor surfaces and shall have trim on the entire length of the exposed edge. Carpet edge trim shall comply with 303.

2022 CBC 11B Section 11B-302.2

Carpet or carpet tile shall be securely attached and shall have a firm cushion, pad, or backing or no cushion or pad. Carpet or carpet tile shall have a level loop, textured loop, level cut pile, level cut/uncut pile texture. Pile height shall be 1/2 inch (12.7 mm) maximum. Exposed edges of carpet shall be fastened to floor surfaces and shall have trim on the entire length of the exposed edge. Carpet edge trim shall comply with Section 11 B-303.

Citation:**As Built:**

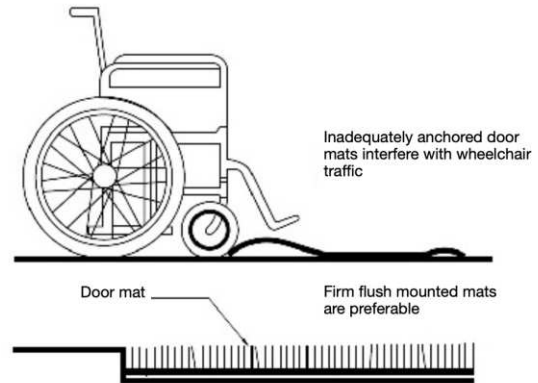
2010 ADAS Section: 302.2

N/A

2022 CBC 11B Section:
11B-302.2

Recommendation:

N/A - Refer to Finding

Finding: 39 (Continued)

Finding: 39 Additional Finding Photos



Community area: Near Restrooms**Finding: 40**

There is no drinking fountain for standing persons.

No fewer than two drinking fountains shall be provided. One drinking fountain shall meet requirements for wheelchair accessibility and one drinking fountain shall meet requirements for standing persons.

Where a single drinking fountain complies with both wheelchair accessibility and requirements for standing persons, it shall be permitted to be substituted for two separate drinking fountains.

Spout outlets of drinking fountains for standing persons shall be 38 inches minimum and 43 inches maximum above the finish floor or ground.

2010 ADAS Section 602.7

Spout outlets of drinking fountains for standing persons shall be 38 inches (965 mm) minimum and 43 inches (1090 mm) maximum above the finish floor or ground.

2010 ADAS Section 211.2

No fewer than two drinking fountains shall be provided. One drinking fountain shall comply with 602.1 through 602.6 and one drinking fountain shall comply with 602.7.

2022 CBC 11B Section 11B-211.2

No fewer than two drinking fountains shall be provided. When provided, one drinking fountain shall comply with Sections 11B-602.1 through 11 B- 602.6, 11B-602.8 and 11 B-602.9 and one drinking fountain shall comply with Section 11B-602.7 and 11B-602.9.

2022 CBC 11B Section 11B-602.7

Spout outlets of drinking fountains for standing persons shall be 38 inches (965 mm) minimum and 43 inches (1092 mm) maximum above the finish floor or ground.

Citation:**As Built:**

2010 ADAS Section: 602.7, 211.2

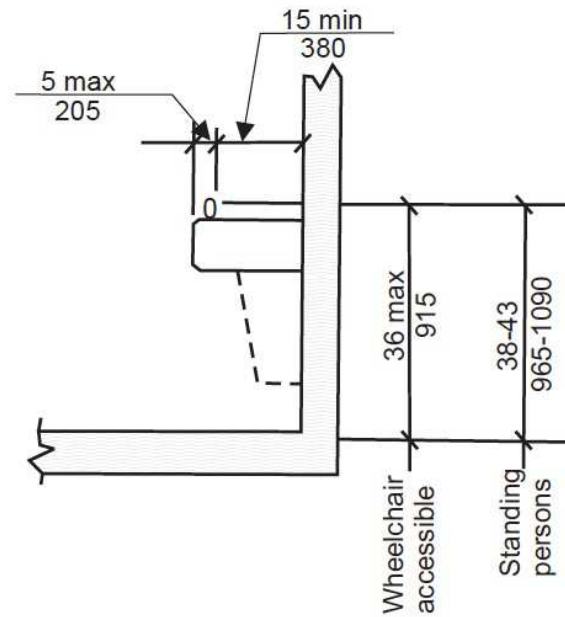
no standing person drinking fountain

2022 CBC 11B Section:
11B-211.2, 11B-602.7

Recommendation:

install compliant Hi/low drinking fountain

Finding: 40 (Continued)



Community area: Near Restrooms

Finding: 41

There is not enough knee clearance under the drinking fountain.

The drinking fountain must have a clear knee space between the bottom of the drinking fountain and the floor not less than 27 inches in height, 30 inches in width, and 8 inches in depth.

2010 ADAS Section 602.2

Units shall have a clear floor or ground space complying with 305 positioned for a forward approach and centered on the unit. Knee and toe clearance complying with 306 shall be provided.

2022 CBC 11B Section 11B-602.2

Units shall have a clear floor or ground space complying with Section 11B-305 positioned for a forward approach and centered on the unit. Knee and toe clearance complying with Section 11B-306 shall be provided.

Citation:

2010 ADAS Section: 602.2

As Built:

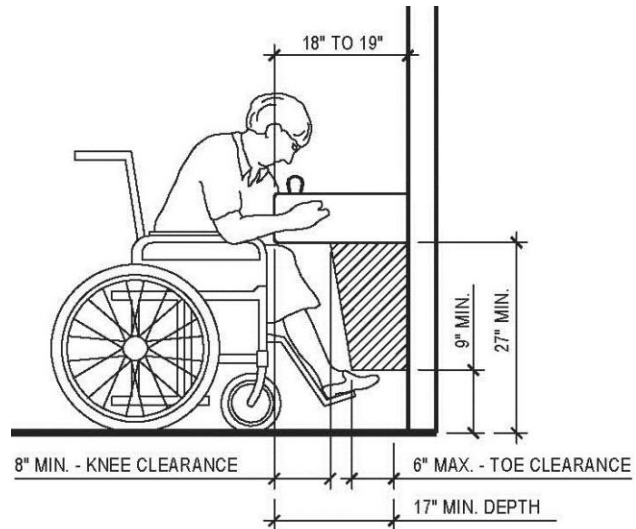
low drinking fountain

2022 CBC 11B Section:

11B-602.2

Recommendation:

install at complaint height



Community area: Near Restrooms**Finding: 42**

The floor mat at the door is not secured in place.

If carpet or carpet tile is used on a ground or floor surface, then it shall be securely attached; have a firm cushion, pad or backing or no cushion or pad; and have a level loop, textured loop, level-cut pile or level-cut/uncut pile texture. The maximum pile height shall be 1/2 inch. Exposed edges of carpet shall be fastened to floor surfaces and have trim along the entire length of the exposed edge. Recessed doormats shall be adequately anchored to prevent interference with wheelchair traffic.

2010 ADAS Section 302.2

Carpet or carpet tile shall be securely attached and shall have a firm cushion, pad, or backing or no cushion or pad. Carpet or carpet tile shall have a level loop, textured loop, level cut pile, or level cut/uncut pile texture. Pile height shall be 1/2 inch (13 mm) maximum. Exposed edges of carpet shall be fastened to floor surfaces and shall have trim on the entire length of the exposed edge. Carpet edge trim shall comply with 303.

2022 CBC 11B Section 11B-302.2

Carpet or carpet tile shall be securely attached and shall have a firm cushion, pad, or backing or no cushion or pad. Carpet or carpet tile shall have a level loop, textured loop, level cut pile, level cut/uncut pile texture. Pile height shall be 1/2 inch (12.7 mm) maximum. Exposed edges of carpet shall be fastened to floor surfaces and shall have trim on the entire length of the exposed edge. Carpet edge trim shall comply with Section 11 B-303.

Citation:**As Built:**

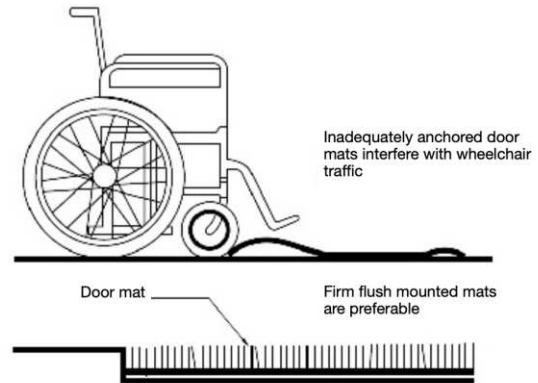
2010 ADAS Section: 302.2

exit towards east parking lot

2022 CBC 11B Section:
11B-302.2

Recommendation:

Not a construction related item, but should be part of your ADA program to secure all of the carpets and rugs

Finding: 42 (Continued)

Finding: 42 Additional Finding Photos



Community area: Martin Luther King Wing

Finding: 43

The sign is mounted too high.

Signs with raised characters or Braille shall be located a minimum of 48 inches above the finish floor or ground surface, measured from the baseline of the lowest line of Braille and 60 inches maximum above the finish floor or ground surface, measured from the baseline of the highest line of raised characters. Mounting location shall be determined so that a person may approach within 3 inches of signage without encountering protruding objects and shall be located so that a clear floor space of 18 inches minimum by 18 inches minimum, centered on the tactile Characters, is provided beyond the arc of any door swing between the closed position and 45 degree open position.

2022 CBC 11B Section 11B-703.4.1

Tactile characters on signs shall be located 48 inches (1219 mm) minimum above the finish floor or ground surface, measured from the baseline of the lowest Braille cells and 60 inches (1524 mm) maximum above the finish floor or ground surface, measured from the baseline of the highest line of raised characters.

Citation:

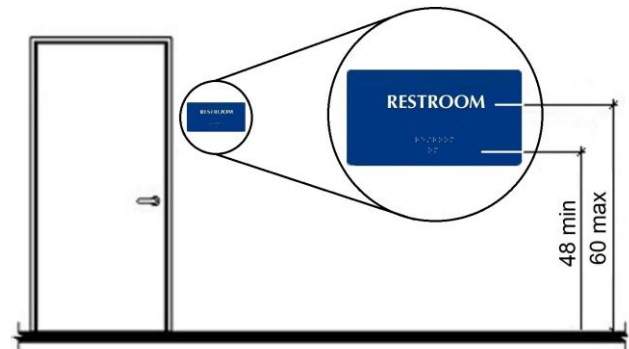
As Built:

2022 CBC 11B Section:
11B-703.4.1

N/A

Recommendation:

N/A - Refer to Finding



Community area: Martin Luther King Wing**Finding: 44**

There is no assistive listening system in the assembly area.

The minimum number of receivers to be provided shall be equal to 4 percent of the total number of seats, but in no case less than two. Twenty-five percent minimum of receivers provided, but no fewer than two, shall be hearing-aid compatible

2022 CBC 11B Section 11B-219.2

An assistive listening system shall be provided in assembly areas, including conference and meeting rooms.

Citation:

2022 CBC 11B Section:
11B-219.2

As Built:

assisted listening and sign

Recommendation:

N/A - Refer to Finding



Community area: Martin Luther King Wing**Finding: 45**

The sign stating that assistive listening system is available is missing.

Each assembly area shall provide signs informing patrons of the availability of the assistive listening system. The sign shall include wording that states "Assistive-Listening System Available" and shall be posted in a prominent place at or near the assembly area entrance. Assistive listening signs shall include the International Symbol of Access for Hearing Loss.

2022 CBC 11B Section 11B-216.10

Each assembly area required by Section 11B-219 to provide assistive listening systems shall provide signs informing patrons of the availability of the assistive listening system. The sign shall include wording that states "Assistive-Listening System Available" and shall be posted in a prominent place at or near the assembly area entrance. Assistive listening signs shall comply with Section 11B-703.5 and shall include the International Symbol of Access for Hearing Loss complying with Section 11B-703.7.2.4.

Citation:

2022 CBC 11B Section:
11B-216.10

As Built:

assisted listening and sign

Recommendation:

N/A - Refer to Finding



Community area: Martin Luther King Wing

Finding: 46

The fire alarm pull station is positioned too high for either a side or front approach.

Where a clear floor or ground space allows a parallel approach to an element and the side reach is unobstructed, the high side reach shall be 48 inches maximum and the low side reach shall be 15 inches minimum above the finish floor or ground.

Where a forward reach is unobstructed, the high forward reach shall be 48 inches maximum and the low forward reach shall be 15 inches minimum above the finish floor or ground.

2010 ADAS Section 308.1

Reach ranges shall comply with 308.

2022 CBC 11B Section 11B-308.2.1

Where a forward reach is unobstructed, the high forward reach shall be 48 inches (1219 mm) maximum and the low forward reach shall be 15 inches (381 mm) minimum above the finish floor or ground.

Citation:

2010 ADAS Section: 308.1

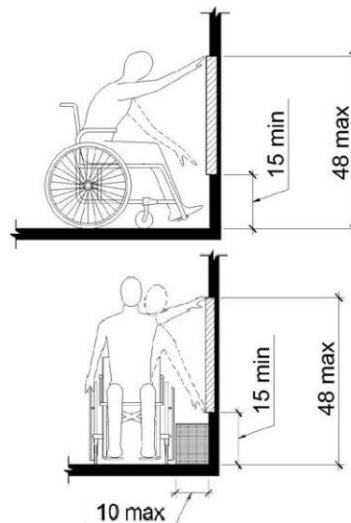
As Built:

N/A

2022 CBC 11B Section:
11B-308.2.1

Recommendation:

N/A - Refer to Finding



Finding: 46 Additional Finding Photos



Community area: Martin Luther King Wing**Finding: 47**

The door has a door stop which prevents it from having a smooth surface at the bottom.

Swinging door surfaces within 10 inches of the finish floor or ground measured vertically must have a smooth surface on the push side extending the full width of the door. Parts creating horizontal or vertical joints in these surfaces shall be within 1/16 inch of the same plane as the other. Cavities created by added kick plates shall be capped. This is required to allow those that use wheelchairs to use their footrests to push the door open without getting trapped or injured by the gate material. All gates, including ticket gates, shall meet all applicable specifications for doors.

2010 ADAS Section 404.2.10

Swinging door and gate surfaces within 10 inches (255 mm) of the finish floor or ground measured vertically shall have a smooth surface on the push side extending the full width of the door or gate. Parts creating horizontal or vertical joints in these surfaces shall be within 1/16 inch (1.6 mm) of the same plane as the other. Cavities created by added kick plates shall be capped.

2022 CBC 11B Section 11B-404.2.10

Swinging door and gate surfaces within 10 inches (254 mm) of the finish floor or ground measured vertically shall have a smooth surface on the push side extending the full width of the door or gate. Parts creating horizontal or vertical joints in these surfaces shall be within 1/16 inch (1.6 mm) of the same plane as the other and be free of sharp or abrasive edges. Cavities created by added kick plates shall be capped.

Citation:**As Built:**

2010 ADAS Section: 404.2.10

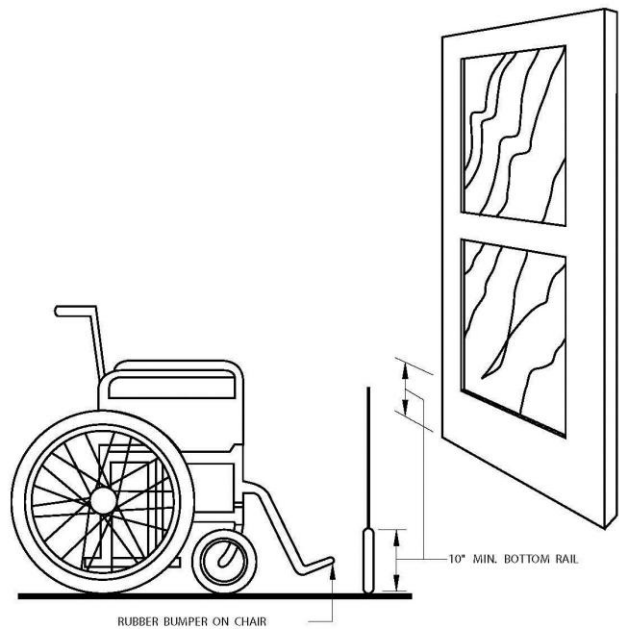
N/A

2022 CBC 11B Section:
11B-404.2.10

Recommendation:

remove door stop

Finding: 47 (Continued)



Finding: 47 Additional Finding Photos



Community area: Martin Luther King Wing**Finding: 48**

The floor mat at the door is not secured in place.

If carpet or carpet tile is used on a ground or floor surface, then it shall be securely attached; have a firm cushion, pad or backing or no cushion or pad; and have a level loop, textured loop, level-cut pile or level-cut/uncut pile texture. The maximum pile height shall be 1/2 inch. Exposed edges of carpet shall be fastened to floor surfaces and have trim along the entire length of the exposed edge. Recessed doormats shall be adequately anchored to prevent interference with wheelchair traffic.

2010 ADAS Section 302.2

Carpet or carpet tile shall be securely attached and shall have a firm cushion, pad, or backing or no cushion or pad. Carpet or carpet tile shall have a level loop, textured loop, level cut pile, or level cut/uncut pile texture. Pile height shall be 1/2 inch (13 mm) maximum. Exposed edges of carpet shall be fastened to floor surfaces and shall have trim on the entire length of the exposed edge. Carpet edge trim shall comply with 303.

2022 CBC 11B Section 11B-302.2

Carpet or carpet tile shall be securely attached and shall have a firm cushion, pad, or backing or no cushion or pad. Carpet or carpet tile shall have a level loop, textured loop, level cut pile, level cut/uncut pile texture. Pile height shall be 1/2 inch (12.7 mm) maximum. Exposed edges of carpet shall be fastened to floor surfaces and shall have trim on the entire length of the exposed edge. Carpet edge trim shall comply with Section 11 B-303.

Citation:**As Built:**

2010 ADAS Section: 302.2

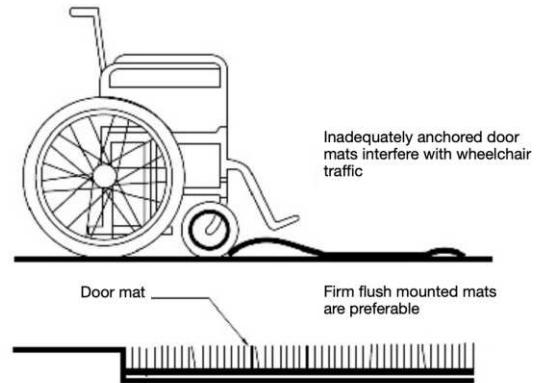
N/A

2022 CBC 11B Section:
11B-302.2

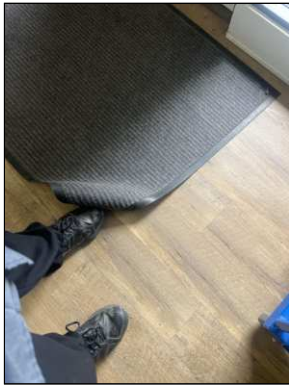
Recommendation:

N/A - Refer to Finding

Finding: 48 (Continued)



Finding: 48 Additional Finding Photos



Community area: Martin Luther King Wing

Finding: 49

The maneuvering clearance on the pull side of the door is obstructed.

Exterior doors must have a maneuvering clearance on the pull side that is a minimum of 60 inches in depth perpendicular to the door in a close position by a minimum width dimension of 24 inches plus the door width. The additional 24 inches must extend past the door on the latch side. The entire maneuvering clearance must be free of obstructions and must be flat (2% max. slope is considered flat in any direction).

2022 CBC 11B Section 11B-404.2.4.1

Swinging doors and gates shall have maneuvering clearances complying with Table 11B-404.2.4.1.

Citation:

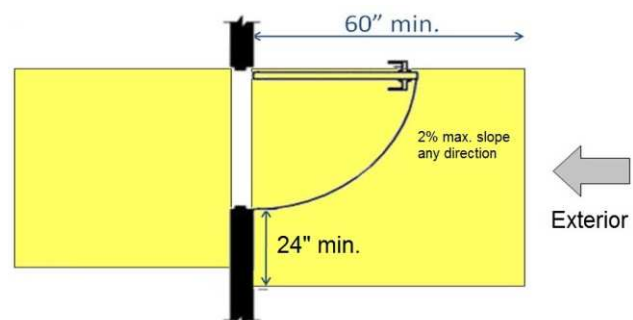
As Built:

2022 CBC 11B Section:
11B-404.2.4.1

obstructed

Recommendation:

pull side (opposite of picture) is obstructed by trash can



Community area: Martin Luther King Wing

Finding: 50

The work surface is not within the allowable range.

The tops of work surfaces provided for public use or common use shall be 28 inches minimum and 34 inches maximum above the finish floor or ground.

2010 ADAS Section 902.3

The tops of dining surfaces and work surfaces shall be 28 inches (710 mm) minimum and 34 inches (865 mm) maximum above the finish floor or ground.

2022 CBC 11B Section 11B-902.3

The tops of dining surfaces and work surfaces shall be 28 inches (711 mm) minimum and 34 inches (864 mm) maximum above the finish floor or ground.

Citation:

As Built:

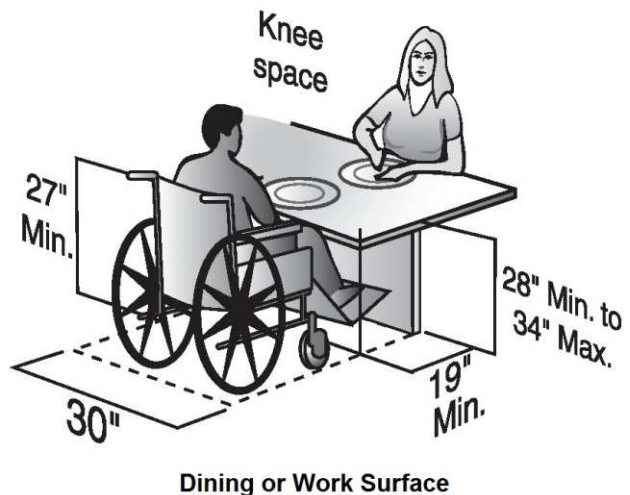
2010 ADAS Section: 902.3

41" high

2022 CBC 11B Section:
11B-902.3

Recommendation:

N/A - Refer to Finding



©Builder's Book, Inc.

Womens Restroom: Womens Restroom

Finding: 51

The geometric sign for the women's room is missing.

A circle symbol shall be located at entrances to women's toilet and bathing facilities. The circle symbol shall be 1/4 inch thick and 12 inches in diameter. The color of the circle symbol shall contrast with the color of the door or surface on which the circle symbol is mounted, either light on a dark background or dark on a light background.

2022 CBC 11B Section 11B-703.7.2.6.2

A circle, 1/4 inch (6.4 mm) thick and 12 inches (305 mm) in diameter, shall be located at entrances to woMen's toilet and bathing facilities. The circle symbol shall contrast with the door, either light on a dark background or dark on a light background.

Citation:

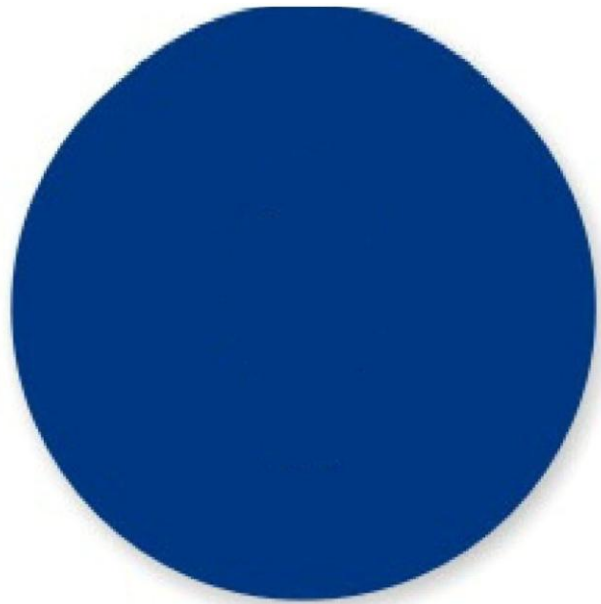
2022 CBC 11B Section:
11B-703.7.2.6.2

As Built:

missing

Recommendation:

install compliant door sign



Womens Restroom: Womens Restroom

Finding: 52

A compliant room identification sign is missing on the strike side of the door.

Wall signs identifying permanent rooms and spaces of a building shall have be horizontal format and the characters raised 1/32 inch minimum and shall be sans serif uppercase characters a minimum of 5/8 inch and a maximum of 2 inches high. Contracted Grade 2 Braille shall be in a horizontal format and shall be placed a minimum of 3/8 inch and a maximum of 1/2 inch directly below the tactile characters; flush left or centered. Signs with raised characters or Braille shall be located a minimum of 48 inches above the finish floor or ground surface, measured from the baseline of the lowest line of Braille and 60 inches maximum above the finish floor or ground surface, measured from the baseline of the highest line of raised characters.

2022 CBC 11B Section 11B-216.2

Interior and exterior signs identifying permanent rooms and spaces shall comply with Sections 11B-703.1, 11B-703.2, 11B-703.3 and 11B-703.5. Where pictograms are provided as designations of permanent rooms and spaces, the pictograms shall comply with Section 11B- 103.6 and shall have text descriptors complying with Sections 11B-703.2 and 11B-703.5.

Citation:

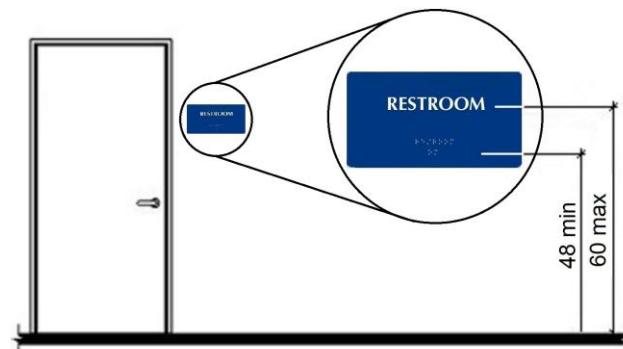
2022 CBC 11B Section:
11B-216.2

As Built:

not on strike side

Recommendation:

needs to be on the strike side



Womens Restroom: Womens Restroom

Finding: 53

The baby changing table is too high when folded down.

The tops of baby changing surfaces shall be 28 inches minimum and 34 inches maximum above the finish floor or ground.

2022 CBC 11B Section 11B-226.4

Baby diaper changing stations shall comply with Sections 11B-309 and 11B-902. Baby diaper changing stations when deployed shall not obstruct the required width of an accessible route except as allowed by Section 11B-307.2. Baby diaper changing stations shall not be located in toilet compartments complying with Section 11B-604.8 within a multiple accommodation toilet facility.

Citation:

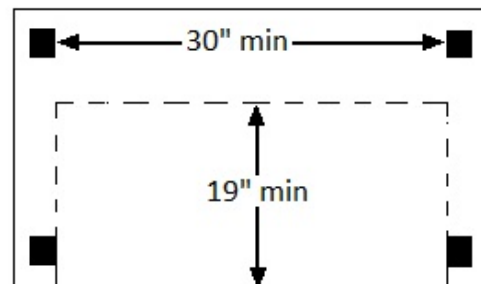
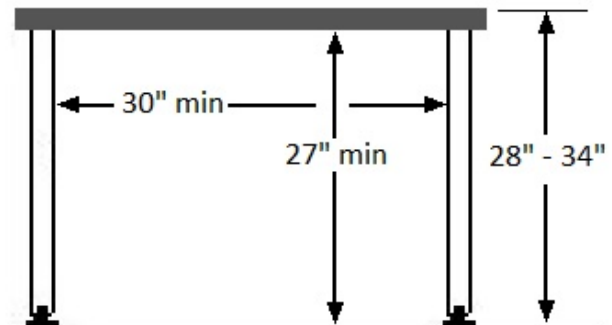
2022 CBC 11B Section:
11B-226.4

As Built:

height

Recommendation:

N/A - Refer to Finding



Finding: 53 Additional Finding Photos



Womens Restroom: Womens Restroom

Finding: 54

The soap dispenser is mounted too high.

Dispensers must have all operable parts a maximum of 40 inches above the floor.

2022 CBC 11B Section 11B-603.5

Where towel or sanitary napkin dispensers, waste receptacles, or other accessories are provided in toilet facilities, at least one of each type shall be located on an accessible route. All operable parts, including coin slots, shall be 40 inches (1016 mm) maximum above the finish floor.

Citation:

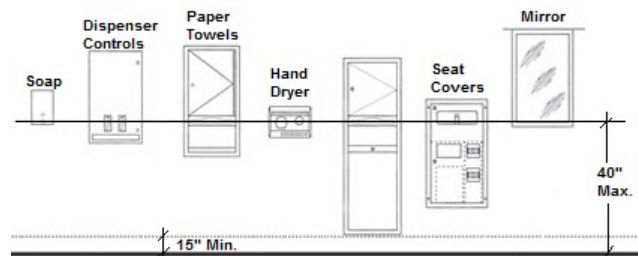
2022 CBC 11B Section:
11B-603.5

As Built:

height

Recommendation:

N/A - Refer to Finding



Finding: 54 Additional Finding Photos



Womens Restroom: Womens Restroom

Finding: 55

The pipes under the lavatory are not correctly insulated.

Hot water supply and drain pipes under lavatories and sinks shall be insulated or otherwise configured to protect against contact. There shall be no sharp or abrasive surfaces under lavatories and sinks.

Citation:

As Built:

all pipes and sharp objects to be covered

Recommendation:

cover all sharp edged and pipes under sink



Womens Restroom: Womens Restroom

Finding: 56

The compartment door is not self closing.

The water closet compartment shall be equipped with a door that has an automatic-closing device.

2010 ADAS Section 604.8.1.2

Toilet compartment doors, including door hardware, shall comply with 404 except that if the approach is to the latch side of the compartment door, clearance between the door side of the compartment and any obstruction shall be 42 inches (1065 mm) minimum. Doors shall be located in the front partition or in the side wall or partition farthest from the water closet. Where located in the front partition, the door opening shall be 4 inches (100 mm) maximum from the side wall or partition farthest from the water closet. Where located in the side wall or partition, the door opening shall be 4 inches (100 mm) maximum from the front partition. The door shall be self-closing. A door pull complying with 404.2.7 shall be placed on both sides of the door near the latch. Toilet compartment doors shall not swing into the minimum required compartment area.

2022 CBC 11B Section 11B-604.8.1.2

Toilet compartment doors, including door hardware, shall comply with Section 11B-404 except that if the approach is from the push side of the compartment door, clearance between the door side of the compartment and any obstruction shall be 48 inches (1219 mm) minimum measured perpendicular to the compartment door in its closed position. Doors shall be located in the front partition or in the side wall or partition farthest from the water closet. Where located in the front partition, the door opening shall be 4 inches (102 mm) maximum from the side wall or partition farthest from the water closet. Where located in the side wall or partition, the door opening hinge side jamb for out swinging doors shall be farthest from the water closet and the strike side jamb shall be 54 inches (1372 mm) minimum from the rear wall. The door shall be self-closing. A door pull complying with Section 11B-404.2.1 shall be placed on both sides of the door near the latch. Doors shall not swing into the clear floor space or clearance required for any fixture. Doors may swing into that portion of maneuvering space which does not overlap the clearance required at a water closet.

Citation:

2010 ADAS Section: 604.8.1.2

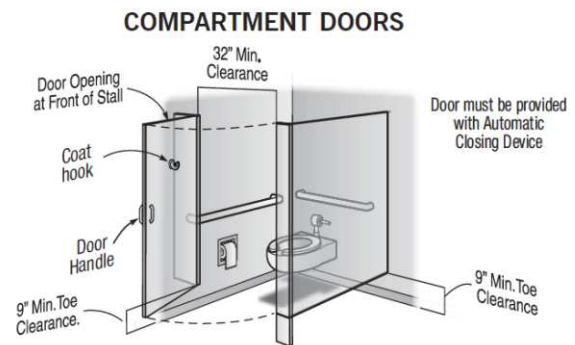
As Built:

door not self closing

2022 CBC 11B Section:
11B-604.8.1.2

Recommendation:
maintenance is required

Finding: 56 (Continued)



Womens Restroom: Womens Restroom

Finding: 57

The water closet compartment is missing a loop handle on both sides of the door.

Water closet compartments must be equipped with a door that has a loop or U-shaped handle on both sides of the door immediately below the latch. The latch must be flip-over style, sliding or other hardware not requiring the user to grasp or twist.

2010 ADAS Section 604.8.1.2

Toilet compartment doors, including door hardware, shall comply with 404 except that if the approach is to the latch side of the compartment door, clearance between the door side of the compartment and any obstruction shall be 42 inches (1065 mm) minimum. Doors shall be located in the front partition or in the side wall or partition farthest from the water closet. Where located in the front partition, the door opening shall be 4 inches (100 mm) maximum from the side wall or partition farthest from the water closet. Where located in the side wall or partition, the door opening shall be 4 inches (100 mm) maximum from the front partition. The door shall be self-closing. A door pull complying with 404.2.7 shall be placed on both sides of the door near the latch. Toilet compartment doors shall not swing into the minimum required compartment area.

2022 CBC 11B Section 11B-604.8.1.2

Toilet compartment doors, including door hardware, shall comply with Section 11B-404 except that if the approach is from the push side of the compartment door, clearance between the door side of the compartment and any obstruction shall be 48 inches (1219 mm) minimum measured perpendicular to the compartment door in its closed position. Doors shall be located in the front partition or in the side wall or partition farthest from the water closet. Where located in the front partition, the door opening shall be 4 inches (102 mm) maximum from the side wall or partition farthest from the water closet. Where located in the side wall or partition, the door opening hinge side jamb for out swinging doors shall be farthest from the water closet and the strike side jamb shall be 54 inches (1372 mm) minimum from the rear wall. The door shall be self-closing. A door pull complying with Section 11B-404.2.1 shall be placed on both sides of the door near the latch. Doors shall not swing into the clear floor space or clearance required for any fixture. Doors may swing into that portion of maneuvering space which does not overlap the clearance required at a water closet.

Citation:

2010 ADAS Section: 604.8.1.2

As Built:

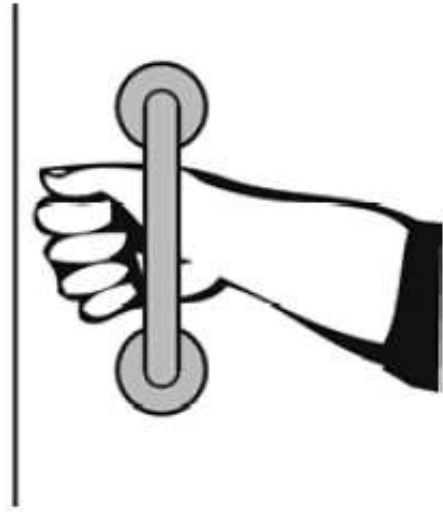
missing handle

2022 CBC 11B Section:
11B-604.8.1.2

Recommendation:

install compliant handles on both sides of the door

Finding: 57 (Continued)



Finding: 57 Additional Finding Photos



Womens Restroom: Womens Restroom

Finding: 58

The coat hook is installed greater than 48 inches above the finished floor.

Where a forward reach is unobstructed, the high forward reach shall be 48 inches maximum above the finished floor.

2010 ADAS Section 308.2.1

Where a forward reach is unobstructed, the high forward reach shall be 48 inches (1220 mm) maximum and the low forward reach shall be 15 inches (380 mm) minimum above the finish floor or ground.

2022 CBC 11B Section 11B-308.2.1

Where a forward reach is unobstructed, the high forward reach shall be 48 inches (1219 mm) maximum and the low forward reach shall be 15 inches (381 mm) minimum above the finish floor or ground.

Citation:

2010 ADAS Section: 308.2.1

As Built:

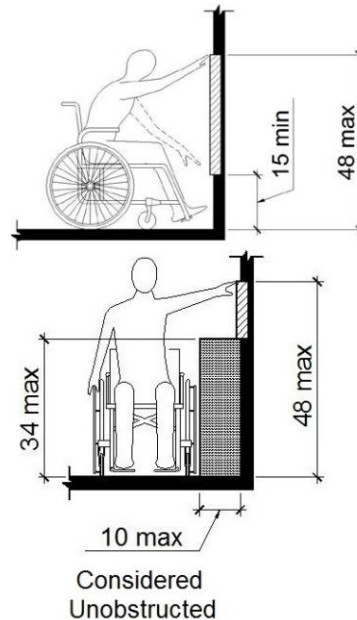
coat hanger too high

2022 CBC 11B Section:

11B-308.2.1

Recommendation:

install at compliant height



Womens Restroom: Womens Restroom

Finding: 59

The toilet paper dispenser is not correctly located in front of the toilet.

Toilet tissue dispensers shall be located on the wall or partition closest to the water closet, 7 inches minimum and 9 inches maximum in front of the water closet measured to the centerline of the dispenser, mounted below the grab bar, with the outlet of the dispenser 19 inches minimum above the finish floor. There shall be a clearance of 1 1/2 inches minimum below the grab bar.

2022 CBC 11B Section 11B-604.7.1

Toilet paper dispensers shall comply with Section 11B-309.4 and shall be 7 inches (178 mm) minimum and 9 inches (229 mm) maximum in front of the water closet measured to the centerline of the dispenser. The outlet of the dispenser shall be below the grab bar, 19 inches (483 mm) minimum above the finish floor and shall not be located behind grab bars. Dispensers shall not be of a type that controls delivery or that does not allow continuous paper flow.

Citation:

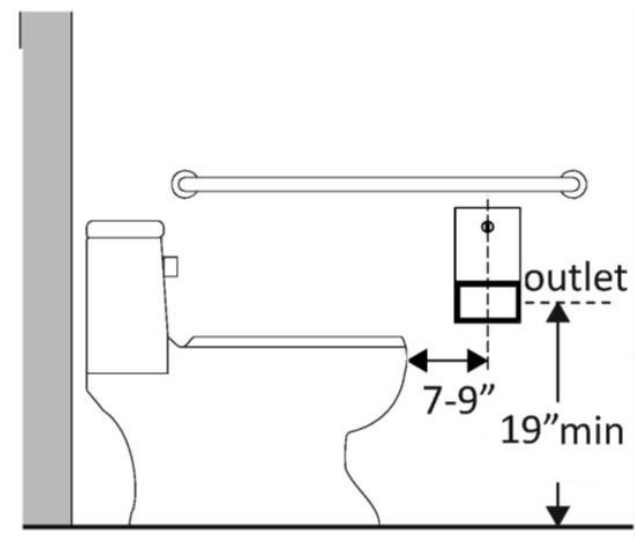
2022 CBC 11B Section:
11B-604.7.1

As Built:

toilet paper in wrong location

Recommendation:

see figure



Womens Restroom: Womens Restroom

Finding: 60

The grab bar is not correctly spaced from the wall or partition.

Grab bars shall be 1-1/2 inches from wall.

2010 ADAS Section 609.3

The space between the wall and the grab bar shall be 1 1/2 inches (38 mm). The space between the grab bar and projecting objects below and at the ends shall be 1 1/2 inches (38 mm) minimum. The space between the grab bar and projecting objects above shall be 12 inches (305 mm) minimum.

2022 CBC 11B Section 11B-609.3

The space between the wall and the grab bar shall be 1 1/2 inches (38 mm). The space between the grab bar and projecting objects below and at the ends shall be 1 1/2 inches (38 mm) minimum. The space between the grab bar and projecting objects above shall be 12 inches (305 mm) minimum.

Citation:

2010 ADAS Section: 609.3

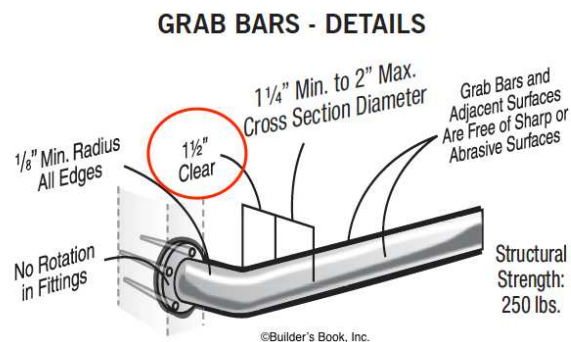
2022 CBC 11B Section:
11B-609.3

As Built:

dispenser is not flush

Recommendation:

11/2" clearance behind grab bars is not maintained



Finding: 60 Additional Finding Photos



Womens Restroom: Womens Restroom

Finding: 61

The dispenser's operation mechanism is too high off the floor.

Dispensers in restrooms must have operable parts a maximum of 40 inches above the floor.

2022 CBC 11B Section 11B-603.5

Where towel or sanitary napkin dispensers, waste receptacles, or other accessories are provided in toilet facilities, at least one of each type shall be located on an accessible route. All operable parts, including coin slots, shall be 40 inches (1016 mm) maximum above the finish floor.

Citation:

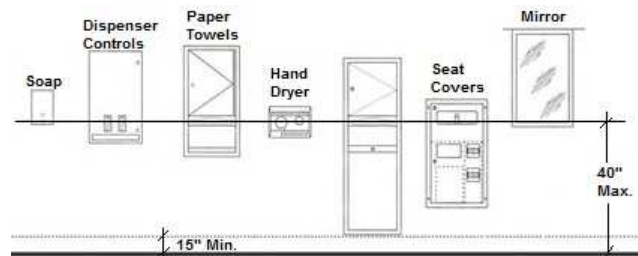
2022 CBC 11B Section:
11B-603.5

As Built:

sharps

Recommendation:

N/A - Refer to Finding



Womens Restroom: Womens Restroom

Finding: 62

The door operating hardware is not located within the compliant range.

Hand-activated door opening hardware, handles, pulls, latches, locks, and other operating devices on accessible doors shall have a shape that is easy to grasp with one hand and does not require tight grasping, tight pinching or twisting of the wrist to operate. Hardware shall be centered between 30 inches and 44 inches above the floor.

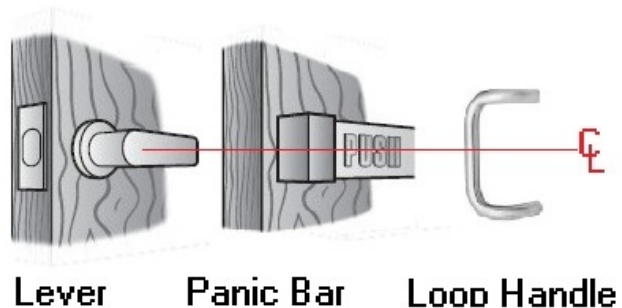
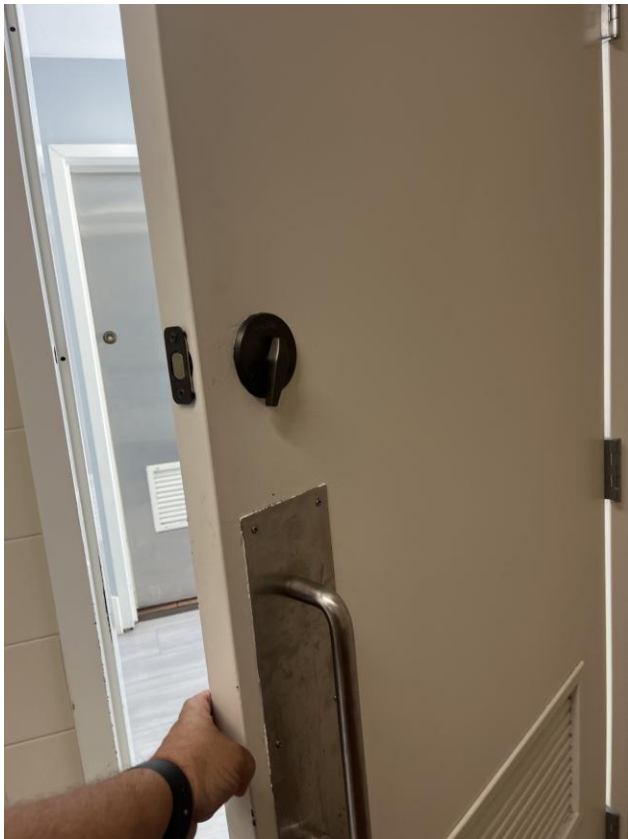
Citation:

As Built:

too high and why?

Recommendation:

Multi accommodation restrooms don't usually have a privacy latch due to security. Not sure why this restroom has this latch, but it is mounted too high



Operating hardware must be centered between 30" and 44" above the floor or ground

Mens Restroom: Mens Restroom

Finding: 63

The geometric sign for the men's room is missing.

A triangle symbol shall be located at entrances to men's toilet and bathing facilities. The triangle symbol shall be an equilateral triangle 1/4 inch thick with edges 12 inches long and a vertex pointing upward. The color of the triangle symbol shall contrast with the color of the door or surface on which the triangle symbol is mounted, either light on a dark background or dark on a light background.

2022 CBC 11B Section 11B-703.7.2.6.1

An equilateral triangle, 1/4 inch (6.4 mm) thick with edges 12 inches (305 mm) long and a vertex pointing upward, shall be located at entrances to Men's toilet and bathing facilities. The triangle symbol shall contrast with the door, either light on a dark background or dark on a light background.

Citation:

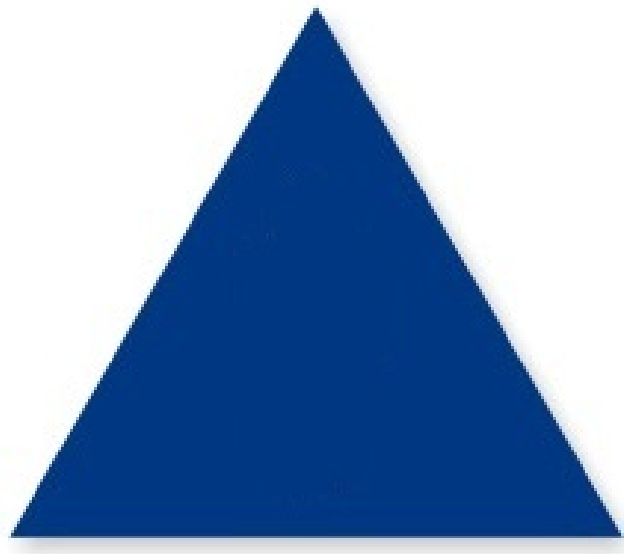
2022 CBC 11B Section:
11B-703.7.2.6.1

As Built:

missing

Recommendation:

install a compliant door sign



Mens Restroom: Mens Restroom

Finding: 64

The wall sign is mounted too high.

Tactile Characters on signs shall be located 48 inches minimum above the finish floor or ground surface, measured from the baseline of the lowest Braille cells and 60 inches maximum above the finish floor or ground surface, measured from the baseline of the highest line of raised characters. Mounting location shall be determined so that a person may approach within 3 inches of signage without encountering protruding objects and shall be located so that a clear floor space of 18 inches minimum by 18 inches minimum, centered on the tactile Characters, is provided beyond the arc of any door swing between the closed position and 45 degree open position.

2022 CBC 11B Section 11B-703.4.1

Tactile characters on signs shall be located 48 inches (1219 mm) minimum above the finish floor or ground surface, measured from the baseline of the lowest Braille cells and 60 inches (1524 mm) maximum above the finish floor or ground surface, measured from the baseline of the highest line of raised characters.

Citation:

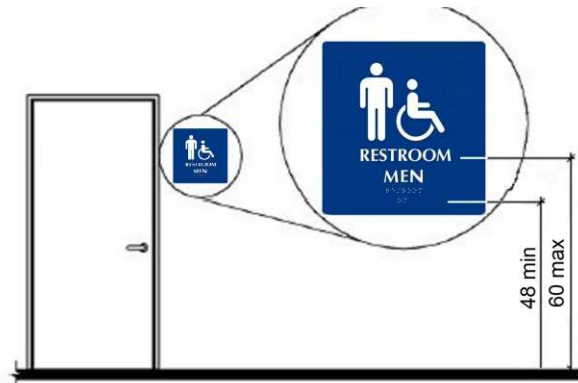
2022 CBC 11B Section:
11B-703.4.1

As Built:

wrong side of door

Recommendation:

not mounted on the strike side of the door



Mens Restroom: Mens Restroom**Finding: 65**

The dispenser is positioned too high for either a side or front approach.

Where a clear floor or ground space allows a parallel approach to an element and the side reach is unobstructed, the high side reach shall be 48 inches maximum and the low side reach shall be 15 inches minimum above the finish floor or ground.

Where a forward reach is unobstructed, the high forward reach shall be 48 inches maximum and the low forward reach shall be 15 inches minimum above the finish floor or ground.

2010 ADAS Section 308.1

Reach ranges shall comply with 308.

2022 CBC 11B Section 11B-308.2.1

Where a forward reach is unobstructed, the high forward reach shall be 48 inches (1219 mm) maximum and the low forward reach shall be 15 inches (381 mm) minimum above the finish floor or ground.

Citation:

2010 ADAS Section: 308.1

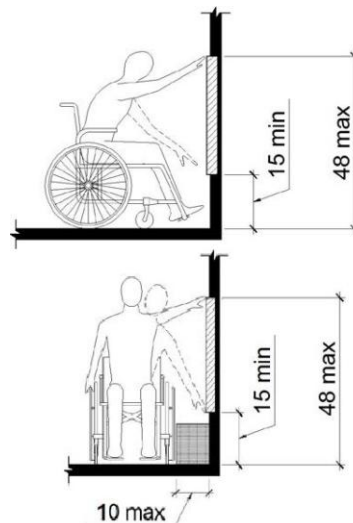
As Built:

N/A

2022 CBC 11B Section:
11B-308.2.1

Recommendation:

N/A - Refer to Finding



Mens Restroom: Mens Restroom**Finding: 66**

The soap dispenser is mounted too high.

Dispensers must have all operable parts a maximum of 40 inches above the floor.

2022 CBC 11B Section 11B-603.5

Where towel or sanitary napkin dispensers, waste receptacles, or other accessories are provided in toilet facilities, at least one of each type shall be located on an accessible route. All operable parts, including coin slots, shall be 40 inches (1016 mm) maximum above the finish floor.

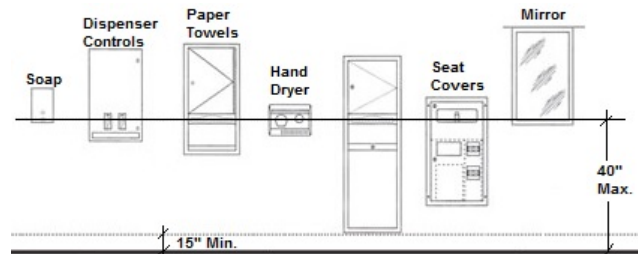
Citation:**As Built:**

2022 CBC 11B Section:
11B-603.5

N/A

Recommendation:

N/A - Refer to Finding



Mens Restroom: Mens Restroom**Finding: 67**

The water and drain pipes under the lavatory are not adequately insulated.

Water supply and drain pipes under lavatories and sinks shall be insulated or otherwise configured to protect against contact. There shall be no sharp or abrasive surfaces under lavatories and sinks.

2010 ADAS Section 606.5

Water supply and drain pipes under lavatories and sinks shall be insulated or otherwise configured to protect against contact. There shall be no sharp or abrasive surfaces under lavatories and sinks.

2022 CBC 11B Section 11B-606.5

Water supply and drain pipes under lavatories and sinks shall be insulated or otherwise configured to protect against contact. There shall be no sharp or abrasive surfaces under lavatories and sinks.

Citation:

2010 ADAS Section: 606.5

As Built:

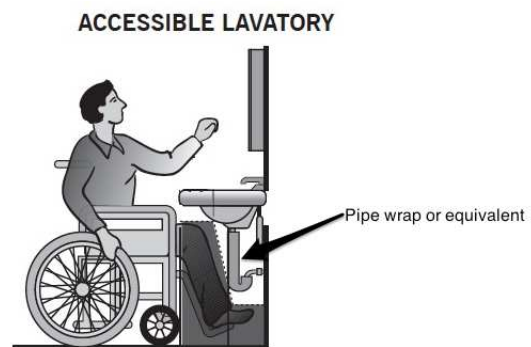
wrong side of door

2022 CBC 11B Section:

11B-606.5

Recommendation:

all sharp objects and pipes to be covered



Mens Restroom: Mens Restroom

Finding: 68

The mirror is mounted above the allowable height above the lavatory and/or counter.

Mirrors must have the bottom edge of the reflecting surface a maximum of 40 inches above the floor if above a sink or counter. Mirrors not located above lavatories or countertops shall be installed with the bottom edge of the reflecting surface 35 inches maximum above the finish floor or ground.

2010 ADAS Section 603.3

Mirrors located above lavatories or countertops shall be installed with the bottom edge of the reflecting surface 40 inches (1015 mm) maximum above the finish floor or ground. Mirrors not located above lavatories or countertops shall be installed with the bottom edge of the reflecting surface 35 inches (890 mm) maximum above the finish floor or ground.

2022 CBC 11B Section 11B-603.3

Mirrors located above lavatories or countertops shall be installed with the bottom edge of the reflecting surface 40 inches (1016 mm) maximum above the finish floor or ground. Mirrors not located above lavatories or countertops shall be installed with the bottom edge of the reflecting surface 35 inches (889 mm) maximum above the finish floor or ground.

Citation:

2010 ADAS Section: 603.3

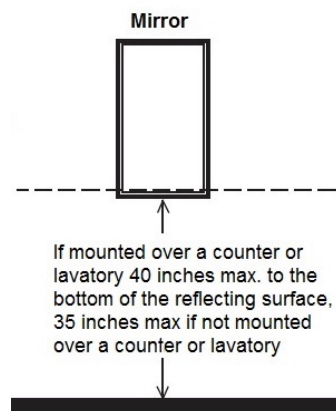
2022 CBC 11B Section:
11B-603.3

As Built:

1/2" too high to reflective
surface

Recommendation:

N/A - Refer to Finding



Mens Restroom: Mens Restroom

Finding: 69

The water closet compartment is missing a loop handle on both sides of the door.

Water closet compartments must be equipped with a door that has a loop or U-shaped handle on both sides of the door immediately below the latch. The latch must be flip-over style, sliding or other hardware not requiring the user to grasp or twist.

2010 ADAS Section 604.8.1.2

Toilet compartment doors, including door hardware, shall comply with 404 except that if the approach is to the latch side of the compartment door, clearance between the door side of the compartment and any obstruction shall be 42 inches (1065 mm) minimum. Doors shall be located in the front partition or in the side wall or partition farthest from the water closet. Where located in the front partition, the door opening shall be 4 inches (100 mm) maximum from the side wall or partition farthest from the water closet. Where located in the side wall or partition, the door opening shall be 4 inches (100 mm) maximum from the front partition. The door shall be self-closing. A door pull complying with 404.2.7 shall be placed on both sides of the door near the latch. Toilet compartment doors shall not swing into the minimum required compartment area.

2022 CBC 11B Section 11B-604.8.1.2

Toilet compartment doors, including door hardware, shall comply with Section 11B-404 except that if the approach is from the push side of the compartment door, clearance between the door side of the compartment and any obstruction shall be 48 inches (1219 mm) minimum measured perpendicular to the compartment door in its closed position. Doors shall be located in the front partition or in the side wall or partition farthest from the water closet. Where located in the front partition, the door opening shall be 4 inches (102 mm) maximum from the side wall or partition farthest from the water closet. Where located in the side wall or partition, the door opening hinge side jamb for out swinging doors shall be farthest from the water closet and the strike side jamb shall be 54 inches (1372 mm) minimum from the rear wall. The door shall be self-closing. A door pull complying with Section 11B-404.2.1 shall be placed on both sides of the door near the latch. Doors shall not swing into the clear floor space or clearance required for any fixture. Doors may swing into that portion of maneuvering space which does not overlap the clearance required at a water closet.

Citation:

As Built:

2010 ADAS Section: 604.8.1.2

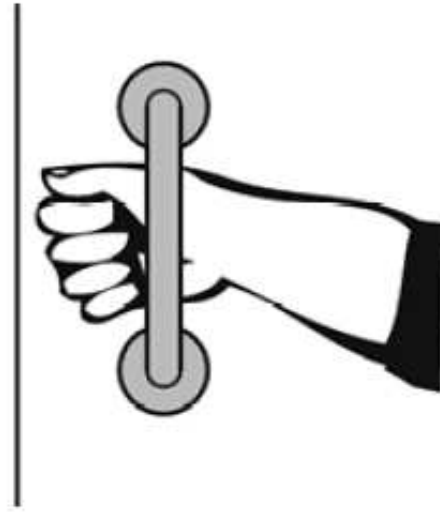
N/A

2022 CBC 11B Section:
11B-604.8.1.2

Recommendation:

install complaint door handles on both sides of the door

Finding: 69 (Continued)



Finding: 69 Additional Finding Photos



Mens Restroom: Mens Restroom

Finding: 70

The compartment door is not self closing.

The water closet compartment shall be equipped with a door that has an automatic-closing device.

2010 ADAS Section 604.8.1.2

Toilet compartment doors, including door hardware, shall comply with 404 except that if the approach is to the latch side of the compartment door, clearance between the door side of the compartment and any obstruction shall be 42 inches (1065 mm) minimum. Doors shall be located in the front partition or in the side wall or partition farthest from the water closet. Where located in the front partition, the door opening shall be 4 inches (100 mm) maximum from the side wall or partition farthest from the water closet. Where located in the side wall or partition, the door opening shall be 4 inches (100 mm) maximum from the front partition. The door shall be self-closing. A door pull complying with 404.2.7 shall be placed on both sides of the door near the latch. Toilet compartment doors shall not swing into the minimum required compartment area.

2022 CBC 11B Section 11B-604.8.1.2

Toilet compartment doors, including door hardware, shall comply with Section 11B-404 except that if the approach is from the push side of the compartment door, clearance between the door side of the compartment and any obstruction shall be 48 inches (1219 mm) minimum measured perpendicular to the compartment door in its closed position. Doors shall be located in the front partition or in the side wall or partition farthest from the water closet. Where located in the front partition, the door opening shall be 4 inches (102 mm) maximum from the side wall or partition farthest from the water closet. Where located in the side wall or partition, the door opening hinge side jamb for out swinging doors shall be farthest from the water closet and the strike side jamb shall be 54 inches (1372 mm) minimum from the rear wall. The door shall be self-closing. A door pull complying with Section 11B-404.2.1 shall be placed on both sides of the door near the latch. Doors shall not swing into the clear floor space or clearance required for any fixture. Doors may swing into that portion of maneuvering space which does not overlap the clearance required at a water closet.

Citation:

As Built:

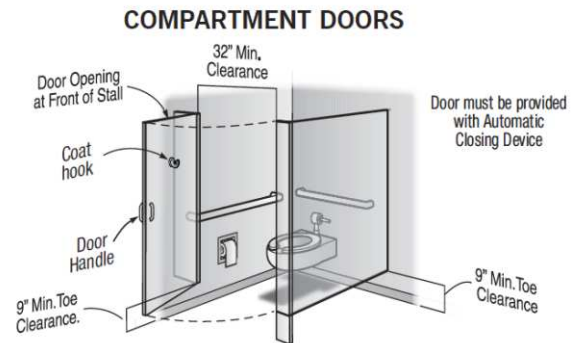
2010 ADAS Section: 604.8.1.2

N/A

2022 CBC 11B Section:
11B-604.8.1.2

Recommendation:
maintenance is required

Finding: 70 (Continued)



Mens Restroom: Mens Restroom**Finding: 71**

The grab bar is not correctly spaced from the wall or partition.

The diameter or width of the gripping surfaces of a grab bar shall be 1 1/4 inches to 1 1/2 inches or the shape shall provide an equivalent gripping surface. If grab bars are mounted adjacent to a wall, the space between the wall and the grab bars shall be 1 1/2 inches.

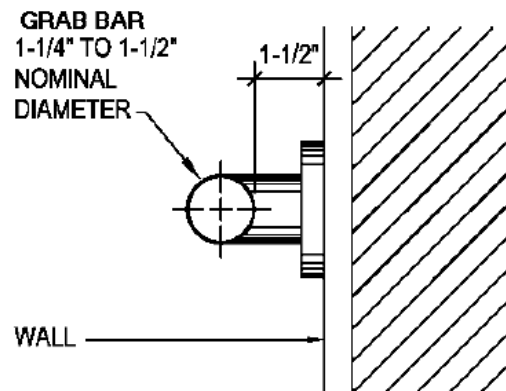
Citation:

As Built:

N/A

Recommendation:

11/2" spacing is not maintained



(a) TYPICAL GRAB BAR SECTION

Mens Restroom: Mens Restroom

Finding: 72

The door operating hardware is not located within the compliant range.

Hand-activated door opening hardware, handles, pulls, latches, locks, and other operating devices on accessible doors shall have a shape that is easy to grasp with one hand and does not require tight grasping, tight pinching or twisting of the wrist to operate. Hardware shall be centered between 30 inches and 44 inches above the floor.

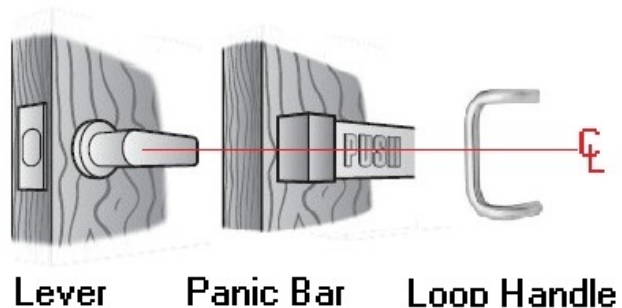
Citation:

As Built:

too high and why?

Recommendation:

Multi accommodation restrooms don't usually have a privacy latch due to security. Not sure why this restroom has this latch, but it is mounted too high



Operating hardware must be centered between 30" and 44" above the floor or ground